



c/- Funding Division
MidCentral District Health Board
PO Box 2056
Palmerston North
P | 06 350 8622
F | 06 350 8926

E | centralcancernetwork@midcentraldhb.govt.nz

Central Cancer Network (CCN) Quarterly Report: July - September 2008

Executive Summary

This progress report for the Central Cancer Network (CCN) covers the period 1st July 2008 – 30th September 2008. This report summarises:

- Development of the CCN
- Key achievements for this period
- Focus for the next quarter

Key achievements for this period include:

CCN infrastructure

- The governance group has met once during this period – see appendices for minutes.
- The operations framework and strategic plan for the network continues to develop

General project activity

- **Prostate early detection testing decision support tool** – GP training sessions have been completed in Wairarapa and Wanganui, Hawkes Bay and Tairāwhiti are scheduled for the next quarter
- **Cancer Medical Imaging Guidelines** - draft guidelines completed
- **Multi-disciplinary meeting framework** – draft guideline circulated to Chairs of existing meetings for approval

Tumour stream activity

- **Lung** – mapping the patients journey has commenced in most DHBs.
- **Head and Neck** – Steering group formed an initial meeting held to discuss TOR and priority areas
- **Skin (proposed)** – communication has gone to stakeholders to gauge interest in a regional forum in February 2009, following on from the launch of the Melanoma guidelines later this year

Addressing inequalities activity

- **Engagement with Maori** – activity has been focussed in the Hawkes Bay region, meeting with providers and community leaders.
- **Engagement with Pacific Peoples** - A regional fono held in Porirua on the 26th August was attended by approximately 40 people from a range of providers. The agenda included discussing the addressing inequalities project, identification of barriers and potential solutions and discussing how CCN can work with Pacific Peoples to progress a partnership model.
- **Cervical Screening Stocktake** – contact has been made with the Regional Managers for the programme and the National Screening Unit to seek their support for the project.

Service group activity

- **Care Coordinators Forum** – the first forum on the 20th August was attended by approximately 35 people who are engaged with coordinating cancer care for patients across primary and secondary services and NGOs. The agenda included discussing a care coordination framework and what attendees wanted from the forum on an ongoing basis.

National activity

- **NZRCN Project Teams Orientation** – the teams met on the 14th August 2008 to share information about how the tumour stream and addressing inequalities work programmes were progressing and to develop shared approaches where applicable.
- **Patient Management Frameworks Forum, 21st August** – approximately 60 stakeholders attended this forum to hear from members of the Victoria Australia team about the development, implementation and evaluation of these frameworks in their state. There was general support from attendees for NZ to explore the adaptation of these frameworks to support the development of cancer services in NZ. MOH and NZRCN to progress this initiative.
- **United Kingdom Study Tour** – Jo Anson, Dr Simon Allan and Dr Andy Simpson joined members from other regional cancer networks visiting a number of UK regional cancer networks and the Scottish and UK national cancer teams in September.
- **Suspected Cancer in Primary: Guidance for referral and reducing disparities, NZ Guidelines Group** – draft guidelines were circulated to stakeholders for comment, with finalised guidelines due for release in February 2009.

Key focus areas for next quarter (Oct - Dec 2008) include:

CCN Infrastructure

- **Annual Report** - under development, to be circulated to stakeholders on the database and lodged on the website in November.
- **Annual Work Plan 08/09** – current work plan to be updated and circulated to stakeholders
- **Strategic Plan 2008-2010** - governance group to progress the planning process at the October meeting with the aim of developing a draft plan by the end of 2008. The Regional Cancer Health Needs Assessment Report will be reviewed at this meeting.

General Projects

- **Prostate early detection testing decision support tool** – GP workshops to be completed in Tairāwhiti and Hawkes Bay with evaluation to follow.
- **Cancer Medical Imaging Guidelines** – Draft guidelines to be circulated for comment.
- **Multi-disciplinary Meeting Framework** – Implementation plan to be developed with stakeholders.

Tumour Stream activity

- **Lung** – mapping of the patients journey for each DHB region to be completed and report drafted for circulation to stakeholders early 2009. Business Requirements Analysis for an IT project to support the capturing and reporting of clinical data to be completed. RCTS will be hosting a Lung Cancer forum on the 21st November focussing on the treatment pathway.
- **Head and Neck** – a second teleconference will be held to progress the TOR and project scope for this group.
- **Colo-rectal (proposed)** – as a result of the decision to commence the national Bowel Screening Programme CCN will approach stakeholders to gauge interest in the establishment of a tumour stream for the region.
- **Skin (proposed)** – subject to stakeholder feedback planning for a regional forum to be held in Feb09 will commence.

Addressing Inequalities activity

- **Maori engagement** – engagement process continues. A report for the Hawkes Bay region to be completed. Partnership model to be further developed.
- **Pacific Peoples engagement** – following on from the initial fono the engagement process to continue to develop, focussing at a district and ethnic group level.
- **Addressing Inequalities Project** – Cervical Screening services stocktake to be completed.

Service Group activity

- **Central Region Palliative Care Network** – next meeting on the 2nd October. Agenda items include: development of district palliative care networks and the formalisation of the regional network, Regional Medical Specialist Model and the Genesis Oncology Trust application
- **Cancer Care Coordinators forum** – next meeting on the 28th November. Agenda items include: presentations from each discipline on how they coordinate the patients' journey and who they link with and a cultural awareness workshop
- **Paediatric / AYA forum (proposed)** – CCN to engage with stakeholders regarding the establishment of this forum

National Activity

- **Patient Management Frameworks** – MOH and NZ Regional Cancer Networks to progress the initiation phase of the project
- **Draft Supportive Care Guidance** – the MOH draft guidance will be circulated to stakeholders for comment
- **Melanoma Forum, 14th November** – launch of the revised Melanoma clinical guidelines and presentations covering prevention, patient experience, diagnosis, treatment and research.
- **3rd National Conference on Lung Cancer, 24th October** –presentations covering prevention, diagnosis, treatment and palliative care

Introduction

This progress report for the Central Cancer Network (CCN) covers the period 1st July 2008 – 30th September 2008. This report summarises:

- Development of the CCN
- Key achievements for this period
- Focus for the next quarter

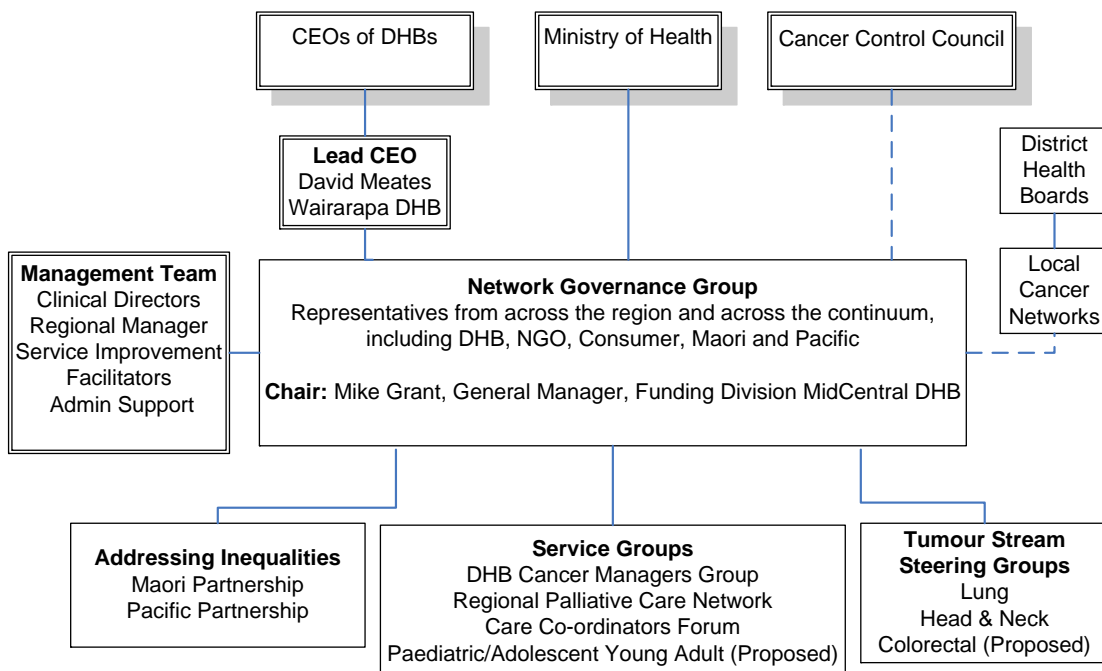
Development of the Central Cancer Network (CCN)

The Central Cancer Network (CCN), established mid 2007, is one of four regional cancer networks established in NZ to facilitate a number of the initiatives contained in the Cancer Control Strategy Action Plan 2005-2010. These initiatives directly relate to the overarching goals of the Cancer Control Strategy 2003, to reduce the impact and incidence of cancer and to reduce inequalities with respect to cancer. The focus of the networks is to undertake leadership, facilitation and co-ordination roles with respect to these initiatives.

The CCN region encompasses the following nine District Health Board areas: Taranaki, Tairāwhiti, Hawkes Bay, Whanganui, MidCentral, Wairarapa, Hutt Valley, Capital and Coast, Nelson/Marlborough. Taranaki, Tairāwhiti, Nelson/Marlborough also link with adjacent regional cancer networks as appropriate.

As CCN has developed over the past year its structure has evolved and the diagram below is more representative of the current direction of travel.

Central Cancer Network (CCN) Structure



Key achievements for this period

CCN Infrastructure

- The governance group has met once during this period – minutes attached in appendices. Main items:
 - Addressing inequalities programme – cancer issues and priorities for Maori
 - Proposed approach to the Regional Cancer Health Needs Assessment
 - Upcoming NZ Cancer Society Men's Health project
 - Genesis Oncology Trust applications for palliative care and medical oncology projects
 - Revising the TOR for the group including appointment processes
- The operations framework and strategic plan for the network continues to develop

General Project activity

- **Prostate early detection testing decision support tool** (*providing a tool and training to GPs to assist them to have the conversation with men re early detection prostate testing.*)
GP workshops have been completed in Wairarapa and Wanganui. Workshops are scheduled for Hawkes Bay and Tairāwhiti. CCN working with the MOH on the evaluation of the programme in consideration of the proposed national rollout
- **Cancer Medical Imaging Guidelines** (*developing guidelines to inform the medical imaging procedures for the diagnosis, staging and surveillance of specific cancers.*)
The project team has met twice in this period and has completed an initial draft of the guidelines. A few chapters will be circulated for expert opinion prior to the draft being circulated widely for consultation.
- **Multi-disciplinary Meeting Framework** (*developing and implementing a framework to support the effective functioning of multi-disciplinary meetings*)
The draft guidelines were circulated to the Chairs of the existing multidisciplinary meetings for approval and comment. Feedback has been incorporated into the document. An implementation plan will be developed in consultation with DHB cancer managers next quarter.

Tumour Stream activity

- **Lung** – mapping the patients' journey has commenced in most areas with each DHB identifying the best way to engage with clinicians in their areas. A data project has been proposed using the lung cancer pathway as a pilot. The project aims to identify, capture and report on specific clinical and process data points along the patients journey. This work will inform the lung cancer journey mapping project, KPI monitoring and link with existing national cancer data projects.
- **Head and Neck** – a Steering Group has been formed and an initial teleconference has been held to discuss the TOR and priority areas for addressing. Again it was viewed that mapping the journey was important to provide information on where improvements can be made in the system. Work will commence on the mapping early 2009.
- **Skin (proposed)** – A communication was sent to regional stakeholders to inform them of the upcoming Melanoma Summit and to explore the interest for a regional meeting of service providers in February 2009. The forum will explore a number of initiatives, including:
 - Clinical Practice Guidelines for the Management of Melanoma and learnings from the November Summit
 - Results of an audit by Central TAS on skin cancer management in MidCentral DHB
 - Examples of service delivery models aimed at improved management of skin patients in the primary sector eg Whanganui and Hutt Valley DHBs
 - The Melanoma Patient Management Framework from Victoria Australia which is a 'process' guideline which sits alongside the clinical guideline.
 - Central Regional plastics group work
 - GP based decision support tools for skin cancer
 - Prevention – focus areas for 09/10

Addressing Inequalities activity

- **Engagement with Maori** – following on from the initial regional hui in Palmerston Nth, CCN has taken a more localised approach. To date CCN has been working within the Hawkes Bay region with two hui and subsequent follow up with key individuals and providers. Meetings in the wider Central Hawkes Bay region, including Wairoa and Mahia is now planned as the final stage towards the development of a draft report for the area. Contact has been made with Taranaki and Whanganui to begin planning similar process for these regions.
- **Engagement with Pacific Peoples** – A regional fono held in Porirua on the 26th August was attended by approximately 40 people from a range of providers. The opening address was delivered by the Honourable Luamanuvao Laban, Minister Pacific Island Affairs. The Minister spoke about the implementation and development of partnerships. Attendees appreciated of the Minister sharing her own personal experiences. The agenda included discussing the addressing inequalities project, identification of barriers and potential solutions and discussing how CCN can work with Pacific Peoples to progress a partnership model. From the feedback received subsequent to the fono, CCN will aim for a district and ethnicity group based process. Work has commenced in the Hawkes Bay region in collaboration with the Pacific Health Service the DHB and independent Pacific Peoples representatives. A research related project scope will be developed as part of the first phase of consultation. The work will include providing support in informing the DHB Pacific Strategy.
- **Cervical Screening Stocktake** – contact has been made with the Regional Managers for the programme and the National Screening Unit to seek their support for the project. The stocktake will include looking at the various contracting mechanisms in place, health promotion plans and coverage rates to determine what combinations are working well and how as a region can we improve overall service delivery.

Service Group activity

- **CCN Cancer Care Coordinators forum, 20th August 2008** –approximately 35 people attended this first meeting of the Cancer Care Coordinators Group. Attendees came from across the region and covered a range of care coordination roles including secondary based disease specific nurses, social workers, primary based cancer nurses, Iwi based cancer coordinators, cancer society support coordinators, adolescent and young adult coordinators, palliative care coordinators. The agenda included:
 - Update on CCN projects / activity
 - Discussion on a care coordination framework
 - Discussing what attendees wanted from the forum moving forward. It was proposed that the group would meet 3-4 per year, alternating between Wellington and Palmerston Nth venues. TOR will be developed for the forum.

National activity

- **NZRCN Project Teams Orientation** – the teams met up in 14th August 2008 to share information about how the tumour stream and addressing inequalities work programmes were progressing and to develop shared approaches where applicable. The project teams will maintain regular contact via teleconference, with 6 monthly face to face meetings proposed.
- **Patient Management Frameworks Forum, 21st August** – approximately 60 stakeholders from around the country, across the continuum and including a variety of providers and consumers attended this forum to hear from members of the Victoria Australia team about the development, implementation and evaluation of these frameworks in their state. There was general support from attendees for NZ to explore the adaption of these frameworks to support the development of cancer services in NZ. MOH and NZRCN to progress this initiative.
- **United Kingdom Study Tour** – Jo Anson, Dr Simon Allan and Dr Andy Simpson joined members from other regional cancer networks visiting a number of UK regional cancer networks and the Scottish and UK national cancer teams in September. The network structure has been evolving for more than 10 years in the UK and the NZ team met with a wide range of stakeholders to learn about

strategies for success. A draft report has been developed and will be discussed at the next NZRCN meeting prior to being circulated.

- **Suspected Cancer in Primary: Guidance for referral and reducing disparities, NZ Guidelines Group** – draft guidelines were circulated to stakeholders for comment, with the finalised guidelines due for release in February 2009

Key Focus areas for the next quarter (October - December 2008)

CCN Infrastructure

- **Annual Report** - under development, to be circulated to stakeholders on the database and lodged on the website in November.
- **Annual Work Plan 08/09** – current work plan to be updated and circulated to stakeholders
- **Strategic Plan 2008-2010** - governance group to progress the planning process at the October meeting with the aim of developing a draft plan by the end of 2008. The regional cancer Health Needs Assessment report will be reviewed at this meeting.

General Projects

- **Prostate early detection testing decision support tool** – GP workshops to be completed in Tairāwhiti and Hawkes Bay with evaluation to follow.
- **Cancer Medical Imaging Guidelines** – Draft guidelines to be circulated for comment.
- **Multi-disciplinary Meeting Framework** – Implementation plan to be developed with stakeholders.

Tumour Stream activity

- **Lung** – mapping of the patients journey for each DHB region to be completed and a report drafted for circulation to stakeholders early 2009. A business requirements analysis for an IT project to support the capturing and reporting of clinical data to be completed. RCTS will be hosting a Lung Cancer forum on the 21st November focussing on the treatment pathway.
- **Head and Neck** – a second teleconference will be held to progress the TOR and project scope for this group.
- **Colo-rectal (proposed)** – as a result of the decision to commence the national Bowel Screening Programme, CCN will approach stakeholders to gauge interest in the establishment of a tumour stream for the region.
- **Skin (proposed)** – subject to stakeholder feedback, planning for a regional forum to be held in February 2009 will commence.

Addressing Inequalities activity

- **Maori engagement** – The engagement process continues. A report for the Hawkes Bay region to be completed. Partnership model to be further developed.
- **Pacific Peoples engagement** – following on from the initial fono the engagement process to continue to develop, focussing at a district and ethnic group level.
- **Addressing Inequalities Project** – Cervical Screening services stocktake to be completed.

Service Group activity

- **Central Region Palliative Care Network** – next meeting on the 2nd October. Agenda items include: development of district palliative care networks and the formalisation of the regional network, Regional Medical Specialist model and the Genesis Oncology Trust application
- **Cancer Care Coordinators forum** – next meeting on the 28th November. Agenda items include: presentations from each discipline on how they coordinate the patients' journey and who they link with and a cultural awareness workshop

- **Paediatric / AYA forum (proposed)** – CCN to engage with stakeholders regarding the establishment of this forum

National Activity

- **Patient Management Frameworks** – MOH and NZ Regional Cancer Networks to progress the initiation phase of the project
- **Draft Supportive Care Guidance** – the MOH draft guidance will be circulated to stakeholders for comment
- **Melanoma Forum, 14th November** – launch of the revised Melanoma clinical guidelines and presentations covering prevention, patient experience, diagnosis, treatment and research.
- **3rd National Conference on Lung Cancer, 24th October** – presentations covering prevention, diagnosis, treatment and palliative care

Conclusion

Progress has been steady during this period on all projects. The delays which have been experienced are due to a number of factors including difficulty accessing busy clinicians and high workloads of the project team. The 07/08 work programme will be refreshed during the next quarter to reflect the adjusted timeframes and additional programme areas. Also consideration will be given to separating the accountability and communication functions of this quarterly report as we move into 2009.

David Meates
CEO Wairarapa DHB
CCN Sponsor

Mike Grant
GM Funding MDHB
CCN Chair

Jo Anson
Network Manager
CCN

Appendices

1. CCN meeting minutes - 12th August 2008
2. Care Coordinators Forum notes – 20th August 2008
3. CCN fono notes – 26th August