



c/- Funding Division
MidCentral District Health Board
PO Box 2056
Palmerston North
P | 06 350 8622
F | 06 350 8926

E | centralcancernetwork@midcentraldhb.govt.nz

Central Cancer Network (CCN) Quarterly Report: October – December 2008

Executive Summary

This progress report for the Central Cancer Network (CCN) covers the period 1st October 2008 – 31st December 2008. This report summarises:

- Development of the CCN
- Key achievements for this period
- Focus for the next quarter

Key achievements for this period include:

CCN infrastructure

- The governance group has met twice during this period – see appendices for minutes.
- **Strategic plan** – Governance group has agreed the process and outline for the strategic plan.
- **Regional Cancer HNA report** – draft report has been reviewed and final report due for release mid-January 2009.
- **Annual Report 2007/08** – completed and disseminated to stakeholders in December 2008.
- **CCN Work Plan 2008/09** – see appendices – CCN updated the 07/08 work plan to reflect progress against current initiatives and identifying new initiatives to be undertaken.
- **Cancer Control Planning Indications for 2009/10** – see appendices – CCN provided DHBs with an outline of activity which has been signalled at a national and regional level for 2009/10 to assist with informing the District Annual Plan process and service planning. This information can also assist other providers of cancer services in their planning.
- **Website / Newsletter** – discussions have been had with the other networks and this will be progressed next quarter.

General project activity

- **Prostate early detection testing decision support tool** – all GP training sessions have been completed with over 130 GPs attending the sessions. Evaluation focussing on how well the tool has been adopted into practice will occur next quarter.
- **Cancer Medical Imaging Guidelines** - draft guidelines completed and following sign-off by the advisory group in February 2009 they will be circulated widely for comment. Implementation plan to be developed.
- **Multi-disciplinary meeting (MDM) framework** – an implementation plan to support the adoption of the framework has been developed and endorsed by the DHB Cancer Managers Group and Governance Group. The plan will be circulated to DHBs in January 2009.
- **Clinical Trials Project** – engagement with stakeholders re project scope has been completed and project commenced. Situational analysis due to be completed by end of February 2009.

Tumour stream activity

- **Lung** – mapping the pathway for lung cancer patients in the region has been completed and the report will be provided to the Steering Group for review in February 2009.
- **Head and Neck** – Steering group have had a second teleconference which focussed on the functioning of the MDM in RCTS and data issues and potential solutions.

- **Skin** – regional forum in February 2009 is currently not supported. Instead a package about guidelines, service configuration and audit results would be collated and disseminated to stakeholders early 2009.

Addressing inequalities activity

- **Engagement with Maori** – a draft report on addressing inequalities in the Hawkes Bay region and proposed local and regional partnership models has been developed. Preliminary meetings have been held in Taranaki and Whanganui.
- **Engagement with Pacific Peoples** – Governance Group have approved the appointment of a part time Pacific Peoples Service Improvement Facilitator to assist CCN to progress this initiative.
- **Cervical Screening Stocktake** – information is currently being collected.
- **Supportive Care Draft Guidance** - CCN undertook an inequalities and whanau ora assessment of the draft guidelines and provided a submission to the MOH.
- **Addressing Inequalities Pilot Funding** – Governance Group have designated \$73K for 2008/09 to support pilot activities within the region aimed at addressing inequalities. An investment strategy will be determined at the February meeting and stakeholders advised.

Service Group Activity

- **Central Region Palliative Care Network (CRPCN), meetings 2nd October & 3rd December:**
 - District and Regional palliative care network guidelines have been developed to support the establishment and functioning of these groups.
 - Regional Palliative Care Medical Specialist Model was completed and a business case for those priority DHBs (Taranaki, Whanganui, MidCentral) was accepted in principle and will be progressed.
 - Genesis Oncology Trust application to support the following projects unsuccessful: Development of a palliative care service directory, development of an audit and benchmarking framework, development of a nursing workforce plan. CRPCN / CCN to consider an alternative strategy.
 - Strategic planning occurring in most DHBs. Regional plan to guide the activities of the CRPCN and to feed into the CCN strategic plan will be developed.
- **CCN Cancer Care Coordinators forum, meeting 28th November 2008** – agenda included disciplines specific meetings with their own agendas, presentations from each of the disciplines on the role they take along the cancer pathway and a 3 hour cultural awareness training programme.
- **DHB Cancer Managers Group, meeting 8th December 2008** – Agenda items included:
 - Update on cancer control activity from around the region.
 - Review and endorsement of the Multi-disciplinary meeting framework implementation plan, CCN Work Plan 2008/09 and DHB DAP planning initiatives for 2009/10.
 - Discussion on the development of key cancer indicators for monitoring at a district and regional level
- **Paediatric / Adolescent Young Adult (AYA) forum (proposed)** – preliminary discussions have been held with stakeholders re the establishment of a forum to support the development of paediatric and AYA services within the region.
- **Local Cancer Networks** – CCN has attended local cancer network meetings in Whanganui, Hawkes Bay, MidCentral and Hutt Valley / Capital and Coast during this period, updating on CCN activity and supporting them in their discussions.

National activity

- **Prioritisation Workshop** – Cancer Control Steering Group and NZ Cancer Treatment Working Party members attended a forum run by the MOH Cancer Control Team to evaluate proposals for new initiatives or additional resource in cancer control, with the aim of establishing priorities for the Budget 2009 process and DHB planning for 2009/10.
- **Patient Management Frameworks** – NZRCN and MOH have progressed this initiative by developing a proposal brief and draft project scope which was presented to the Cancer Control Steering Group's December meeting. Additional work required.
- **Tumour streams** – the NZ Regional Cancer Networks and NZ Cancer Treatment Working Party reviewed a discussion paper on the current prevalence and activity of tumour specific groups in NZ. The paper proposed the development of agreed principles to guide future activity at both regional and national levels. Outcomes from this process will influence future tumour stream development within CCN.

- **Supportive Care Draft Guidance** – the draft guidelines were circulated for comment and the finalised guideline is due to be released in February 2009. The NZRCN are working with the MOH on implementation.
- **Early Stage Breast Cancer Clinical Guidelines** – the draft guidelines were circulated for comment and the finalised guideline is due to be released in February 2009

Key focus areas for next quarter (Jan – March 2009) include:

CCN Infrastructure

- **Strategic Plan 2008-2010** - governance group to workshop plan in February and then take the draft out to stakeholders for review and endorsement.
- **Regional Cancer Health Needs Assessment Report** – to be finalised and circulated to stakeholders in January.
- **Website / Newsletter** – to be developed.
- **Consumer representatives framework** – NZRCN to develop agreed principles for the development of the consumer role in the NZ context. CCN to engage with stakeholders to develop its framework.

General Projects

- **Prostate early detection testing decision support tool** – evaluation of the adoption of the tool by GPs to be completed. Final report to be provided to Genesis Oncology Trust.
- **Cancer Medical Imaging Guidelines** – Draft guideline to be circulated for comment and implementation plan developed.
- **Multi-disciplinary Meeting Framework** – Implementation plan to be circulated to stakeholders and commenced.
- **Clinical Trials Project** – situational analysis to be completed and report provided to stakeholders.
- **Pathology Guidelines** – CCN to engage with stakeholders re the development of a project to develop guidelines for the analysis and reporting of cancer specimens.

Tumour Stream activity

- **Lung** – draft report from the mapping project to be completed and reviewed by the steering group before being circulated to stakeholders. Work on data project to continue.
- **Head and Neck** – face to face meeting to be held in February. Mapping the head and neck pathway to commence.
- **Skin** – package of information about guidelines, service configuration and audit results to be collated and disseminated to stakeholders early 2009.

Addressing Inequalities activity

- **Maori engagement** – Report for the Hawkes Bay region to be completed and presented at a hui in March. Engagement processes to continue in Whanganui and Taranaki. Partnership model to be further developed.
- **Pacific Peoples engagement** – appointment of part-time Pacific Peoples Service Improvement Facilitator and development of a plan for engagement.
- **Cervical Screening services stocktake** - to be completed.
- **Addressing Inequalities Pilot Funding** – investment strategy for 2008/09 to be agreed by Governance group and implemented.

Service Group activity

- **Central Region Palliative Care Network** – next meeting March 2009. Agenda items include: regional plan, MOH project scope for the implementation of the specialist palliative care service specifications and gap analysis.
- **Cancer Care Coordinators forum** – next meeting March 2009. Agenda items include: supervision, stocktake of care coordination roles from around the region, patient assessment processes from around the region and across the continuum.
- **Paediatric / AYA forum (proposed)** – CCN to engage with stakeholders regarding the establishment of this forum.
- **Local Cancer Networks** – CCN to continue to support their work and attend meetings as able

National Activity

- **NZRCN Project Teams Forum** – CCN to host the 6-monthly forum in February 2009.
- **Patient Management Frameworks** – MOH and NZ Regional Cancer Networks to progress the initiation phase of the project.
- **Tumour Streams** – a nationally agreed approach to the development of tumour streams to be progressed.
- **Supportive Care Guidance** – to be released.
- **Early Stage Breast Cancer Guidelines** – to be released.
- **Suspected Cancer in Primary: Referral Guidelines** – to be released.

Introduction

This progress report for the Central Cancer Network (CCN) covers the period 1st October 2008 – 31st December 2008. This report summarises:

- Development of the CCN
- Key achievements for this period
- Focus for the next quarter

Development of the Central Cancer Network (CCN)

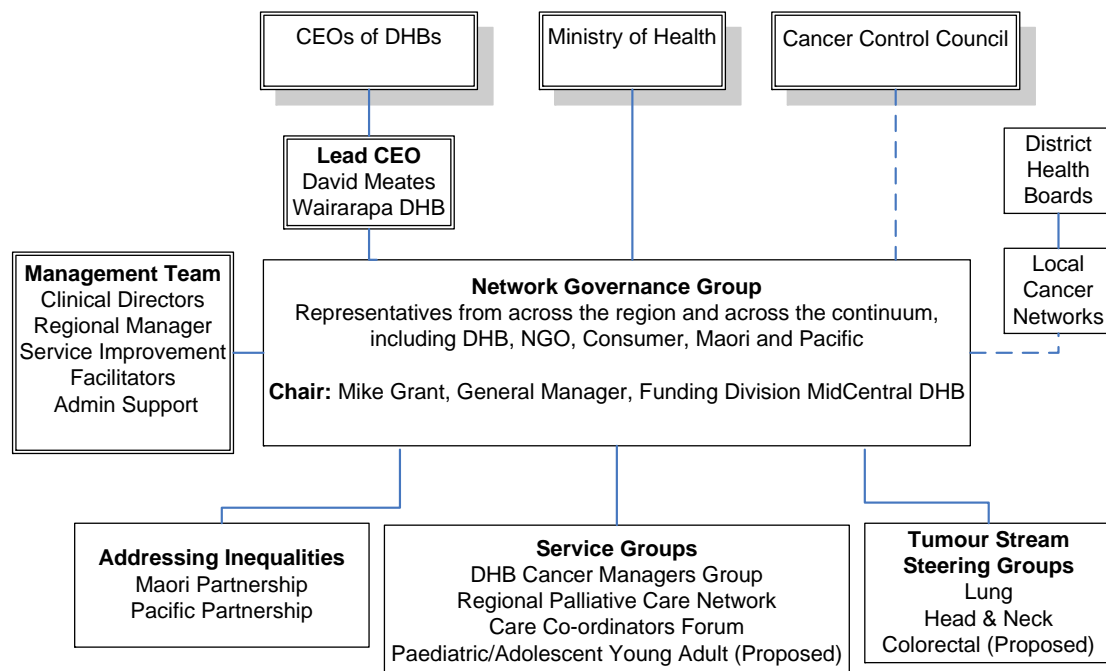
The Central Cancer Network (CCN), established mid 2007, is one of four regional cancer networks established in NZ to facilitate a number of the initiatives contained in the Cancer Control Strategy Action Plan 2005-2010. These initiatives directly relate to the overarching goals of the Cancer Control Strategy 2003, to reduce the impact and incidence of cancer and to reduce inequalities with respect to cancer. The focus of the networks is to undertake leadership, facilitation and co-ordination roles with respect to these initiatives.

The CCN region encompasses the following eight District Health Board areas: Taranaki, Tairāwhiti, Hawkes Bay, Whanganui, MidCentral, Wairarapa, Hutt Valley, Capital and Coast.

Note: Taranaki, Tairāwhiti and Nelson/Marlborough (Southern Cancer Network) also link with adjacent regional cancer networks as appropriate.

As CCN has developed over the past year its structure has evolved and the diagram below is more representative of the current direction of travel.

Central Cancer Network (CCN) Structure



Key achievements for this period

CCN Infrastructure

- **Governance Group** - The group has met twice during this period – minutes attached in appendices. Main items discussed:
 - Review of the draft Regional Cancer Health Needs Assessment (HNA) report
 - Agreeing the process and outline for the Strategic plan
 - Review of the Hawkes Bay Addressing Inequalities report
 - Meeting the two new paediatric oncologists from Capital and Coast DHB
- **Strategic Plan** - the operations framework and strategic plan for the network continues to develop. The Governance Group will workshop the strategic plan at its February meeting and then the draft will be circulated to stakeholders for review and comment. The finalised plan will be completed by the end of June 2009.
- **Regional Cancer Health Needs Assessment (HNA) report** – CCN contracted Central TAS to complete a Regional Cancer HNA report. This work builds on the initial HNA work completed to inform the Regional Clinical Services Plan (RCSP). The report will be signed off by the Clinical Directors mid-January 2009 and will be circulated to stakeholders.
- **Annual Report 2007/08** – CCN completed its annual report and circulated it to stakeholders in December 2008.
- **CCN work plan 2008/09 – see appendices** – CCN updated the 07/08 work plan to reflect progress against current initiatives and identifying new initiatives to be undertaken. The initiatives are grouped under the following programme areas:
 - Addressing Inequalities programme
 - Tumour stream programme
 - Service group programme
 - General projects
 - Network Infrastructure
- **Cancer Control Planning Indications for 2009/10 – see appendices** – CCN provided DHBs with an outline of activity which has been signalled at a national and regional level for 2009/10 to assist with informing the District Annual Plan process and service planning. This information can also assist other providers of cancer services in their planning.
- **Website / Newsletter** – CCN has been liaising with the other regional cancer networks re the development of a website and this will be progressed in the next quarter. Alongside this process CCN will also develop a quarterly newsletter.

General Project activity

- **Prostate early detection testing decision support tool** (*providing a tool and training to GPs to assist them to have the conversation with men re early detection prostate testing*). All GP workshops have now been completed with approximately 130 GPs attending from across the region. Feedback from the attendees at the workshops has generally been very positive with respects to the tool as well as the training programme. A second evaluation, focussing on how well the tool has been adopted within the GPs practice will be undertaken March 09.
- **Cancer Medical Imaging Guidelines** (*developing guidelines to inform the medical imaging procedures for the diagnosis, staging and surveillance of specific cancers.*) The updated draft was circulated to the advisory group for comment. The group will come together in February to sign-off the final draft before it is circulated for wider comment and to consider implementation issues.
- **Multi-disciplinary Meeting Framework** (*developing and implementing a framework to support the effective functioning of multi-disciplinary meetings*). The draft implementation plan to support the adoption of the framework has been reviewed by the DHB Cancer Managers Group and Governance Group. The plan will be updated following their feedback and presented to DHBs in January 2009.

- **Clinical Trials Project** (*situational analysis of clinical trial activities across the region to identify areas for improvement and opportunities to inform and support advancement of clinical trial research*)
CCN has engaged with the two Clinical Trials Units (Regional Cancer Treatment Service / Wellington Blood and Cancer Centre) in the region to develop the project scope. Data gathering has commenced with the aim of having the report completed within the next three months.

Tumour Stream activity

- **Lung** – mapping the pathway for lung cancer patients in each DHB has been completed and interviews have been held with consumers to gain their perspectives on their journey. Most of the information to inform the report has now been gathered and a draft report will be provided to the steering group for its February 2009 meeting. The work on the data project, which aims to identify, capture and report on specific clinical and process data points along the patients journey, is progressing. Midlands Cancer Network (MCN) is also undertaking an information systems project during the first 6 months of 2009 which will help inform CCN's direction.
- **Head and Neck** – a second Steering Group teleconference has been held. The agenda included discussion on the current functioning of the RCTS head and neck multi-disciplinary meeting, data and data systems. The group will have its first face-to-face meeting in Palmerston Nth in February 2009. Mapping the pathway for head and neck patients across the region will commence early 2009.
- **Skin** – The national Melanoma Guidelines were launched to the sector in November. Currently there does not appear to be support for the proposed regional skin forum for February. Following feedback from the DHB Cancer Mangers group it was agreed that a package of information about guidelines, service configuration and audit results would be collated and disseminated to stakeholders early 2009.

Addressing Inequalities activity

- **Engagement with Maori** – the engagement process in Hawkes Bay has continued and the draft report for the region has been completed. The report will be circulated to stakeholders during February with a follow-up hui scheduled for March 2009. Preliminary meetings have also been held with stakeholders in Whanganui and Taranaki and activity in these regions will be the focus for the next quarter. A second regional hui is planned for April 2009 and will focus on showcasing projects aimed at addressing inequalities and promoting whanau ora, including the various models of navigator/ coordinator roles which are emerging.
- **Engagement with Pacific Peoples** – the Governance Group have approved funding to engage a part-time Pacific Peoples Service Improvement Facilitator to work alongside the management team to progress the engagement process for Pacific Peoples. Appointment to this position will occur January 2009 and a plan will be developed for taking this work forward.
- **Cervical Screening Stocktake** – (*cervical screening situational analysis reviewing the various contracting mechanisms, health promotion plans and coverage rates to determine which combinations are working well and how as a region can we improve overall service delivery*)
Information is currently being collected.
- **Supportive Care Guidance draft** – CCN undertook an inequalities and whanau ora assessment of the draft guidelines and provided a submission to the MOH.
- **Addressing inequalities pilot funding** – the Governance Group have designated \$73K of the 2008/09 CCN budget to support pilot activities within the region aimed at addressing inequalities. An investment strategy for 2008/09 will be determined at the February governance meeting and stakeholders will be advised of the outcome.

Service Group activity

- **Central Region Palliative Care Network (CRPCN), meetings 2nd October & 3rd December:**
 - District and Regional palliative care networks – guidelines have been developed to support the establishment and functioning of these groups. The aim is to have district networks

- functioning in all areas and representatives from these networks coming together to form the regional network.
- Regional Palliative Care Medical Specialist Model – a model to support medical specialist provision within the region was endorsed by the CRPCN and the GMs Planning and Funding. Feedback from the DHBs showed that Taranaki, Whanganui and MidCentral had immediate needs for additional medical specialist support and a sub-regional business case was developed. The GMs Planning and Funding accepted the business case in principle at their December meeting and the relevant DHBs will continue to negotiate the implementation in early 2009.
 - Genesis Oncology Trust Applications – project scopes were developed to support the application to the Genesis Oncology Trust for 6 months project support to undertake the following: Development of a palliative care service directory, development of an audit and benchmarking framework, development of a nursing workforce plan. Unfortunately CRPCN / CCN have been unsuccessful with the application for funding and an alternative strategy will need to be considered.
 - Strategic planning – the December meeting focussed on sharing information about the strategic planning work that is happening in each district and discussion on the development of a regional plan to guide the activities of the CRPCN and to feed into the CCN strategic plan
- **CCN Cancer Care Coordinators forum, meeting 28th November 2008** – the second meeting for this group was held in Palmerston Nth and was attended by approximately 30 people. The agenda included disciplines specific meetings with their own agendas and presentations from each of the disciplines on the role they take along the cancer pathway. A 3 hour cultural awareness training programme was also delivered and feedback from participants was very positive.
 - **DHB Cancer Managers Group, meeting 8th December 2008** – this group met for its 6-monthly meeting. Agenda items included:
 - Update on cancer control activity from around the region
 - Review and endorsement of the Multi-disciplinary meeting framework implementation plan, CCN Work Plan 2008/09 and DHB DAP planning initiatives for 2009/10
 - Discussion on the development of key cancer indicators for monitoring at a district and regional level
 - **Paediatric / Adolescent Young Adult (AYA) forum (proposed)** – preliminary discussions have been held with stakeholders re the establishment of a forum to support the development of paediatric and AYA services within the region. Consideration is being given to governance structures which are developing within their units, national governance groups and whether a regional group is would add value or not. CCN will follow-up with stakeholders early in 2009.
 - **Local Cancer Networks** – CCN has attended local cancer network meetings in Whanganui, Hawkes Bay, MidCentral and Hutt Valley / Capital and Coast during this period, updating on CCN activity and supporting them in their discussions.

National activity

- **Prioritisation Workshop** – Cancer Control Steering Group and NZ Cancer Treatment Working Party members attended a forum run by the MOH Cancer Control Team to evaluate proposals for new initiatives or additional resource in cancer control, with the aim of establishing priorities for the Budget 2009 process and DHB planning for 2009/10.
- **Patient Management Frameworks** – NZRCN and MOH have progressed this initiative by developing a proposal brief and draft project scope which was presented to the Cancer Control Steering Group's December meeting.
- **Tumour streams** – the NZ Regional Cancer Networks and NZ Cancer Treatment Working Party reviewed a discussion paper on the current prevalence and activity of tumour specific groups in NZ. The paper proposed the development of agreed principles to guide future activity at both regional and national levels. Outcomes from this process will influence future tumour stream development within CCN.
- **Supportive Care Draft Guidance** – the draft guidelines were circulated for comment and the finalised guideline is due to be released in February 2009. The NZRCN are working with the MOH on implementation.

- **Early Stage Breast Cancer Clinical Guidelines** – the draft guidelines were circulated for comment and the finalised guideline is due to be released in February 2009

Key Focus areas for the next quarter (January - March 2009)

CCN Infrastructure

- **Strategic Plan 2008-2010** - Governance Group to workshop plan in February and then take the draft out to stakeholders for review and endorsement.
- **Regional Cancer Health Needs Assessment Report** – to be finalised and circulated to stakeholders in January.
- **Website / Newsletter** – to be developed.
- **Consumer representatives framework** – NZRCN to develop agreed principles for the development of the consumer role in the NZ context. CCN to engage with stakeholders to develop its framework.

General Projects

- **Prostate early detection testing decision support tool** – evaluation of the adoption of the tool by GPs to be completed. Final report to be provided to Genesis Oncology Trust.
- **Cancer Medical Imaging Guidelines** – Draft guideline to be circulated for comment and implementation plan developed.
- **Multi-disciplinary Meeting Framework** – Implementation plan to be circulated to stakeholders and commenced.
- **Clinical Trials Project** – situational analysis to be completed and report provided to stakeholders.
- **Pathology Guidelines** – CCN to engage with stakeholders re the development of a project to develop guidelines for the analysis and reporting of cancer specimens.

Tumour Stream activity

- **Lung** – draft report from the mapping project to be completed and reviewed by the steering group before being circulated to stakeholders. Work on data project to continue.
- **Head and Neck** – face to face meeting to be held in February. Mapping the head and neck pathway to commence.
- **Skin** – package of information about guidelines, service configuration and audit results to be collated and disseminated to stakeholders early 2009.

Addressing Inequalities activity

- **Maori engagement** – Report for the Hawkes Bay region to be completed and presented at a hui in March. Engagement processes to continue in Whanganui and Taranaki. Partnership model to be further developed.
- **Pacific Peoples engagement** – appointment of part-time Pacific Peoples Service Improvement Facilitator and development of a plan for engagement.
- **Cervical Screening services stocktake** - to be completed.
- **Addressing Inequalities Pilot Funding** – investment strategy for 2008/09 to be agreed by Governance Group and implemented

Service Group activity

- **Central Region Palliative Care Network** – next meeting March 2009. Agenda items include: regional plan, MOH project scope for the implementation of the specialist palliative care service specifications and gap analysis.

- **Cancer Care Coordinators forum** – next meeting March 2009. Agenda items include: supervision, stocktake of care coordination roles from around the region, patient assessment processes from around the region and across the continuum.
- **Paediatric / AYA forum (proposed)** – CCN to engage with stakeholders regarding the establishment of this forum.
- **Local Cancer Networks** – CCN to continue to attend these meetings as able.

National Activity

- **NZRCN Project Teams Forum** – CCN to host the 6-monthly forum in February 2009.
- **Patient Management Frameworks** – MOH and NZ Regional Cancer Networks to progress the initiation phase of the project
- **Tumour Streams - a nationally agreed approach to the development of tumour streams to be progressed.**
- **Supportive Care Guidance** – the MOH draft guidance will be circulated to stakeholders for comment
- **Early Stage Breast Cancer Guidelines** – to be launched.
- **Suspected Cancer in Primary: Referral Guidelines** – to be launched.

Conclusion

As 2008 draws to a close it has been pleasing to see the progress that has been made on the projects. This has only been achieved through the strong support that CCN has received from its stakeholders. A number of the projects are now moving into the implementation phase and CCN will be working closely with planners and providers of services within the region to support them to progress the recommended actions.

David Meates
CEO Wairarapa DHB
CCN Sponsor

Mike Grant
GM Funding MDHB
CCN Chair

Jo Anson
Network Manager
CCN

Appendices

1. CCN meeting minutes - 28th October 2008, 9th December 2008
2. CCN Annual Work Plan 2008/09
3. Cancer Control Planning Indications for 2009/10