



c/- Funding Division
MidCentral District Health Board
PO Box 2056
Palmerston North
P | 06 350 8622
F | 06 350 8926

E | centralcancernetwork@midcentraldhb.govt.nz

Central Cancer Network (CCN) Quarterly Report : January – March 2008

Executive summary

This progress report for the Central Cancer Network (CCN) covers the period 1st January 2008 – 31st March 2008. This report summarises:

- Development of the CCN
- Key achievements for this period
- Focus for the next quarter

Key achievements for this period include:

CCN infrastructure

- An initial meeting held to consider what cancer services in the region might achieve in 10 years time

CCN Engagement

- Feedback to the Cancer Control Council not supporting development of a Cancer Control Collaborative as a standing committee / group
- Preliminary meeting with Wairarapa DHB to discuss an approach to exploring the potential for future delivery of medical oncology / chemotherapy services in their district
- Attending the first meeting of the newly formed Whanganui Cancer Network Group
- Supporting the development of Adolescent and Young Adult cancer services in the region
- Engaging with DHBs to propose a regional approach to the development of the following palliative care initiatives:
 - The development of local and regional palliative care networks
 - Alignment of palliative care planning
 - Scoping the new specialist palliative care service specifications which include:
 - Training and education in palliative care for generalists
 - 24/7 availability of specialist telephone advice
 - Last days of life care

CCN Work plan 07/08

- The following projects scopes were developed and circulated for feedback:
 - GP tool for individual prostate screening decision making
 - Cancer Medical Imaging Guidelines
 - Multi-disciplinary meeting framework
 - Hospice 'Not For Resuscitation' Guidelines
 - Lung cancer pathway

General

- Meeting with members of the Victoria, Australia cancer control team to discuss opportunities to share learnings.

Key focus areas for next quarter (Jan – Mar 2008) include:

- Appointing Service Improvement Facilitators to progress the reducing inequalities and tumour stream / Cancer service project work
- Progressing the mapping process for the lung cancer pathway and consideration of establishing a head and neck tumour stream
- Progressing Maori and Pacific engagement via a hui and fono
- Working with MDHB to progress a sub-regional palliative care medical specialist workforce project
- Working with the other cancer networks to progress a proposal to take a lead in the implementation of the Supportive Care Guidelines due for completion late 2008. Also progressing an RFP process to contract analytical support to develop regional HNA data
- Canvassing stakeholders about the interest in the development of a regional cancer care coordinators forum
- Facilitating the six monthly meeting between DHB cancer plan and cancer service managers from around the region

Introduction

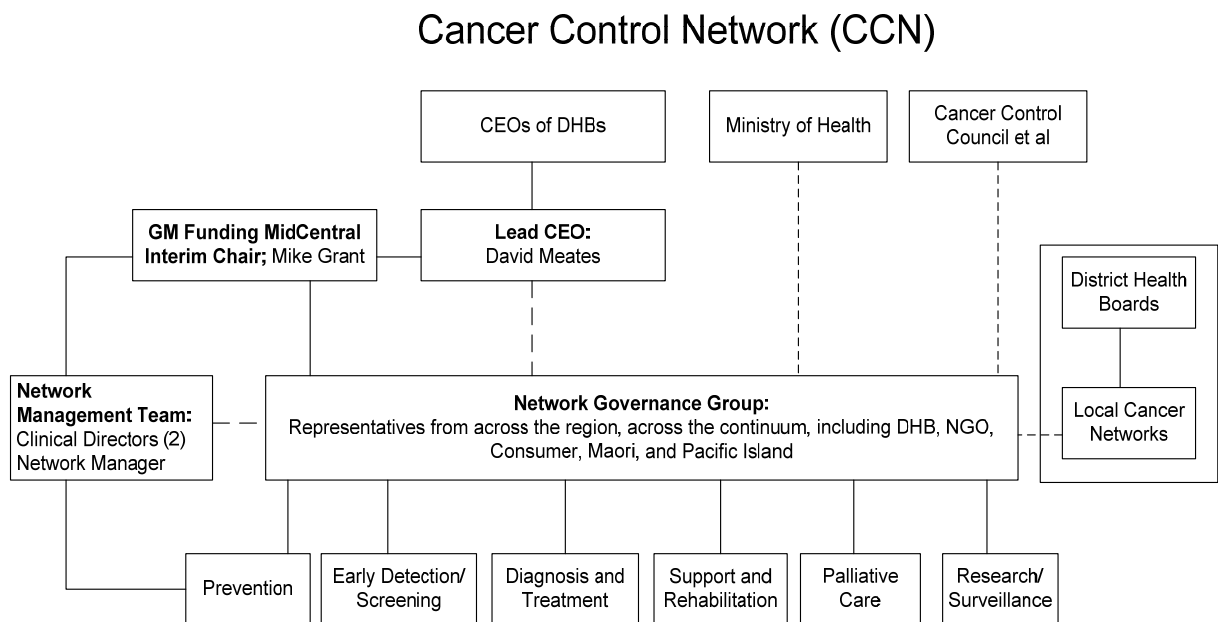
This progress report for the Central Cancer Network (CCN) covers the period 1st January 2008 - 31st March 2008. This report summarises:

- Development of the CCN
- Key achievements for this period
- Focus for the next quarter

Development of the Central Cancer Network (CCN)

The Central Cancer Network (CCN), established mid 2007, is one of four regional cancer networks which have been recently set-up in NZ to facilitate a number of the initiatives contained in the Cancer Control Strategy Action Plan 2005-2010. These initiatives directly relate to the overarching goals of the Cancer Control Strategy 2003 which are to reduce the impact and incidence of cancer and to reduce inequalities with respect to cancer. The focus of the networks is to undertake leadership, facilitation and co-ordination roles with respect to these initiatives.

The CCN region encompasses the following nine District Health Board areas: Taranaki, Tairāwhiti, Hawkes Bay, Whanganui, MidCentral, Wairarapa, Hutt Valley, Capital and Coast, Nelson/Marlborough. The mandate of the network is to strongly influence the direction of cancer service provision in the region, consistent with the Cancer Control Strategy Action Plan, by working collaboratively with cancer service providers in the region (government and non-government), Maori, Pacific Island and consumers.



Key achievements for this period

CCN Long Term Planning

In January 2008 CCN held an initial meeting to consider what cancer services within the region might look like in 10-15 years. This work will help inform the CCN strategic planning process as well as the current Regional Clinical Services Plan (RSCP) being undertaken by TAS and the Long Term Sector Plan (LTSP) project being undertaken by the Ministry of Health. Information gained from the exercise was circulated to local cancer networks for input and will be workshopped further at the next CCN governance group meeting in April before being discussed more widely.

Engagement with DHBs re Palliative Care Service Development

Subsequent to the DHBs receiving CFA variation funding to commence scoping and implementing the new components of the specialist palliative care service specifications, CCN sent a letter to the General Managers, Planning and Funding to propose a regional approach to the following initiatives:

- The development of local and regional palliative care networks
- Alignment of palliative care planning
- Scoping the new specialist palliative care service specifications which include:
- Training and education in palliative care for generalists
- 24/7 availability of specialist telephone advice
- Last days of life care

The proposal recommended the joint funding of a project position to undertake this work. CCN is awaiting feedback from stakeholders.

CCN Projects

The following projects were commenced during this period:

- GP tool for individual prostate screening decision making
- Cancer Medical Imaging Guidelines
- Multi-disciplinary meeting framework
- Hospice 'Not For Resuscitation' Guidelines
- Lung cancer pathway

Draft project scopes have been circulated widely to stakeholders and expressions of interest have been received for the various advisory groups to support these projects.

Medical Oncology Services in the Wairarapa

An initial meeting was held with Wairarapa DHB representatives to discuss the potential for medical oncology services to be provided in the Wairarapa instead of patients being required to travel to Palmerston North or Wellington for their chemotherapy. Wairarapa will be exploring this initiative further with stakeholders over the next few months.

Adolescent / Young Adult (AYA) Cancer Services

The MOH have funded MidCentral DHB and Capital and Coast DHB to develop AYA cancer services to support adolescents and young adults who are diagnosed with cancer. The establishment of a AYA coordinator position is key to the development of this service. CCDHB have a joint nurse / psychologist model. MDHB is currently developing its model and CCN is supporting this process. A national meeting of AYA service stakeholders in February provided opportunities to gain feedback on service developments across the country.

Whanganui Cancer Network Group

Whanganui held its first meeting of its local cancer network in January 2008. This forum has been welcomed by stakeholders in the region as a vehicle for progressing the local cancer plan and as a forum for raising issues with respect to cancer control in the district.

Victoria Cancer Control Agencies

Jo Anson, CCN Manager and Jan Hewitt, MCN Manager had the opportunity to meet with a number of staff from the Victoria Department of Human Services and Integrated Cancer Services whilst in Melbourne in March. This was a great opportunity to discuss various approaches to cancer control

and areas of focus. There were a number of synergies identified and opportunities to learn from each other. A report from the meetings is attached in the appendices.

Consultation re the Cancer Control Collaborative

CCN provided feedback to the Cancer Control Council on the proposed development of a cancer control collaborative. The development of the collaborative as a standing committee / group was not supported by the CCN as it was considered that it would not add value to the existing cancer control infrastructure.

Key Focus areas for the next quarter (April - June 2008)

Network Infrastructure

CCN will continue to develop its capacity and capability, subject to budgetary approval, with the appointment of service improvement facilitators to progress the following work streams:

- Addressing inequalities
- Tumour stream / cancer services development

Tumour Streams

The mapping process for the lung tumour stream is being developed and will be commenced in the next quarter.

CCN to consider an approach by head and neck cancer clinicians to establish a project to identify and address issues relating to the provision of services for patients presenting with head and neck cancers. If prioritisation agreed, work will commence on establishing the head and neck tumour stream.

Maori and Pacific Engagement

CCN is proposing to host a regional hui on the 23rd June 2008 to engage with Maori from across the region. The programme will include providing updates on cancer control activities across the region which focus on Maori and to discuss an appropriate partnership model with the network. This will be followed later in the year with a Pacific peoples Fono.

Patient Management Frameworks, Victoria

A meeting with representatives from the Victoria department of Human Services and Integrated Cancer Services to discuss the potential adoption / adaption of the frameworks in NZ is planned to occur now in May.

Sub regional palliative care medical specialist workforce project

MidCentral DHB and CCN will be engaging with palliative care stakeholders to develop a model for a regional medical specialist workforce to assist with the provision of specialist palliative care services across the region.

Regional cancer network collaboration

The NZ Regional Cancer Networks (NZ RCN) will be collaborating on developing the following processes:

- **Cancer Supportive Care Guidelines** – the networks are proposing a regional approach to assist with the implementation of the new guidelines. A draft project scope will go to the April Supportive Care EAG for discussion.
- **Regional Health Needs Assessment RFP** – the networks will undertake a joint RFP process to engage analytical support to complete this work which will feed into the strategic planning process

Care Co-ordination Framework and Forum

Over the past few years a number of DHBs in the region have made investments in the cancer care co-ordination workforce, resulting in the development of new positions and new models of service delivery. Other DHBs have signalled the future development of care

coordination roles in their cancer plans. CCN is proposing the establishment of a regional Cancer Care Coordinators Forum to provide an opportunity to gain a better understanding of different care coordination roles and models of care based on location, tumour groups, service settings and people involved. Stakeholders will be canvassed for support for the establishment of this forum.

DHB Cancer Plan Managers / Cancer Service Managers meeting

The second meeting for this group is proposed for the 11th June 2008. CCN regularly links with this group, providing regular updates about cancer control activities and advice as required. This group intends to meet six monthly to update on progress with their respective cancer plans and to identify opportunities for regional approaches.

Conclusion

The focus for this quarter has been to develop and consult on the project scopes to support the activity proposed in the work plan. Project advisory groups are being established. Activity over the next quarter will engage clinicians on the ground with a number of projects which when completed, will support them in their day to day practice and support consistency of approach between services.

David Meates
CEO Wairarapa DHB
CCN Sponsor

Mike Grant
GM Funding MDHB
CCN Chair

Jo Anson
Network Manager
CCN

Appendices

1. CCN meeting minutes - 19th February 2008
2. Report from meeting with Cancer Control Teams, Victoria