



c/- Funding Division  
MidCentral District Health Board  
PO Box 2056  
Palmerston North  
P | 06 350 8622  
F | 06 350 8926

E | [centralcancernetwork@midcentraldhb.govt.nz](mailto:centralcancernetwork@midcentraldhb.govt.nz)

## Central Cancer Network (CCN) Quarterly Report: April – June 2008

### Executive Summary

This progress report for the Central Cancer Network (CCN) covers the period 1<sup>st</sup> April 2008 – 30<sup>th</sup> June 2008. This report summarises:

- Development of the CCN
- Key achievements for this period
- Focus for the next quarter

### Key achievements for this period include:

#### CCN infrastructure

- The governance group has met twice during this period – see appendices for minutes.
- There have been a few resignations and new appointments to the governance group
- CFA funding for the network has been agreed for the next three years and a multi-year budget has been approved
- Work continues on developing the CCN operations framework and strategic plan
- Service Improvement Facilitators have been appointed to progress the addressing inequalities and tumour stream / cancer service project work

#### CCN Work plan 07/08

- GP tool for individual prostate screening decision making – GP training sessions have been scheduled to occur during July-September in Wairarapa, Whanganui, Hawkes Bay and Tairāwhiti
- Cancer Medical Imaging Guidelines group has met and agreed to adapt UK guidelines for the NZ context
- Multi-disciplinary meeting framework has been drafted and circulated to stakeholders for comment
- Hospice 'Not For Resuscitation' Guidelines have been completed and circulated to stakeholders for implementation
- Lung tumour stream – the steering group has met and work has commenced on mapping the patients journey at a DHB level.
- A Head and Neck tumour stream establishment process was commenced
- Palliative care – a joint initiative with MDHB on a project to develop a sub-regional medical specialist model has commenced. The MOH, regional networks and specialist service specifications advisory group will meet to determine how the gap analysis for the new service specifications will be undertaken

#### CCN Engagement

- CCN's first regional hui to engage with Iwi/Māori was held on the 23<sup>rd</sup> June in Palmerston North. The focus was on discussion on what partnership and ongoing engagement would look like and the CCN Addressing Inequalities project – see appendices for the report

- DHB Cancer Managers met on 11<sup>th</sup> June. The focus was on sharing updates from DHBs re progress against cancer plans, discussing regional opportunities and providing feedback to CCN on current direction of travel and engagement processes.
- Regional palliative care network met on the 18<sup>th</sup> June. The focus of the agenda was reviewing the activities of the network to date and deciding how it wants to position itself for the future. CCN will work with the group and DHBs to progress the development of local palliative care networks and formalising the regional group.
- CCN presentation to the Cancer Control Council on the 17<sup>th</sup> April about the development and activities of the network. The Council was complimentary about the rapid development of the network and the breadth of activity that was being undertaken.

### General

- CCN management team members attended a Cancer Control Council forum to discuss planning and priority setting in cancer control
- NZ regional cancer networks are working with the MOH on a plan to assist with the implementation of the new supportive care guidelines which are currently under development

### **Key focus areas for next quarter (Jul-Sep 2008) include:**

- CCN annual report for 07/08 will be available mid August
- **The following CCN general projects will be progressed:**
  - GP tool for individual prostate early detection testing – GP training sessions to be completed. CCN will work with the MOH on the evaluation of the project
  - Cancer Medical Imaging Guidelines to be drafted and circulated for comment
  - Multi-disciplinary meeting framework to be approved by chairs of the multi-disciplinary meetings across the region and implementation commenced
- **The following tumour stream focus areas will be progressed:**
  - Mapping the lung cancer journey continues with the aim of having a report with findings and recommendations available by the end of October
  - Head and Neck Steering Group establishment and confirmation of project scope
  - Consideration of establishing a colo-rectal tumour stream
  - Consideration of facilitating a regional symposium on the management of skin cancers
- **The addressing inequalities programme will progress, including:**
  - Continuing to build on the outcomes of the first regional hui via a second hui to be held in Hawkes Bay on the 11<sup>th</sup> August 2008, at the invitation of Iwi/Maori and the local cancer network
  - Working with stakeholders in the Wellington region to facilitate a regional fono on the 26<sup>th</sup> August to engage with Pasifika about CCN activity, the Addressing Inequalities project and discussion on developing an ongoing engagement / partnership model
  - Meeting with stakeholder groups and service providers across the region to discuss the project and gather information to complete the situational analysis.
- NZ regional cancer network project teams will meet in August to discuss approaches and develop common principles around project management
- CCN will facilitate a forum for health professionals in cancer care co-ordination roles across the region to network on the 20<sup>th</sup> August
- The regional cancer networks and the MOH will facilitate a forum for a wide range of stakeholders to discuss Patient Management Frameworks with a team from Victoria, Australia
- CCN will scope and commence a project to identify, collate and report on data points along the lung cancer patient journey
- CCN will continue to develop its operations framework and strategic planning process including collating regional HNA data.

## Introduction

This progress report for the Central Cancer Network (CCN) covers the period 1<sup>st</sup> April 2008 – 30<sup>th</sup> June 2008. This report summarises:

- Development of the CCN
- Key achievements for this period
- Focus for the next quarter

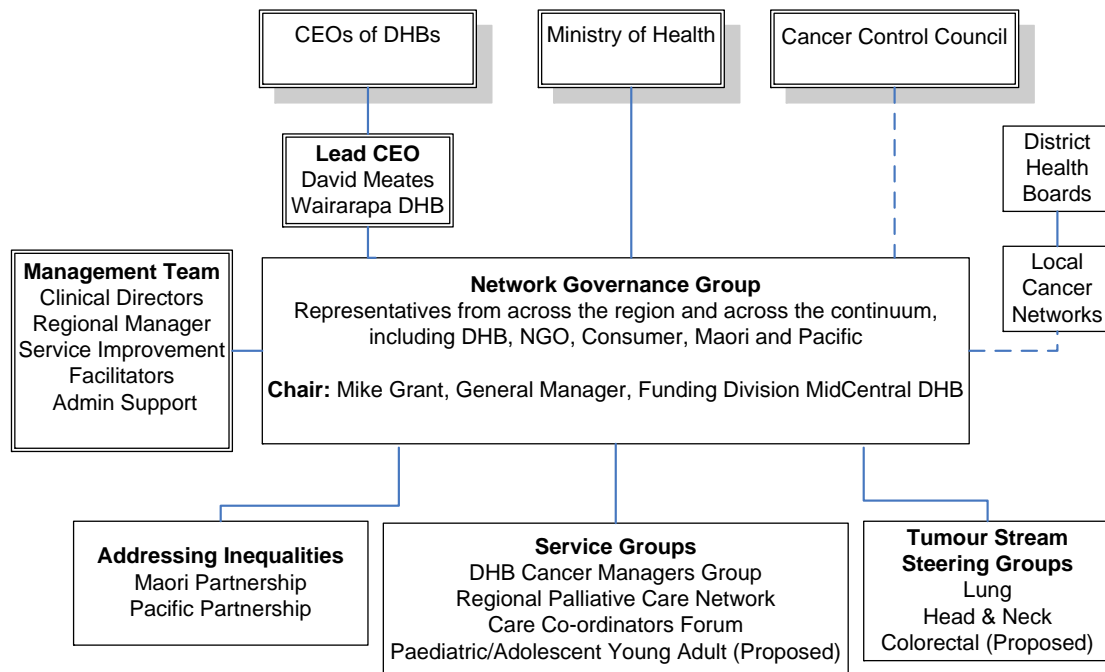
## Development of the Central Cancer Network (CCN)

The Central Cancer Network (CCN), established mid 2007, is one of four regional cancer networks established in NZ to facilitate a number of the initiatives contained in the Cancer Control Strategy Action Plan 2005-2010. These initiatives directly relate to the overarching goals of the Cancer Control Strategy 2003, to reduce the impact and incidence of cancer and to reduce inequalities with respect to cancer. The focus of the networks is to undertake leadership, facilitation and co-ordination roles with respect to these initiatives.

The CCN region encompasses the following nine District Health Board areas: Taranaki, Tairāwhiti, Hawkes Bay, Whanganui, MidCentral, Wairarapa, Hutt Valley, Capital and Coast, Nelson/Marlborough.

As CCN has developed over the past year its structure has evolved and the diagram below is more representative of the current direction of travel.

### Central Cancer Network (CCN) Structure



## **Key achievements for this period**

### **CCN Infrastructure**

- The governance group has met twice during this period – minutes attached in appendices. There have been a few changes to the composition of the governance group during this period:
  - Wairarapa local cancer network have endorsed Marie McKay, Cancer Portfolio Manager WDHB to replace Simon Snook
  - Virginia Brind, Cancer Portfolio Manager TDH replaces Pania Ruakere
  - Barry Mahon has resigned from the group due to his surgical commitments and a surgical oncology replacement is being sought
  - Kathryn McKeefry has moved to another position within CCDHB and has resigned from the group
- The CFA funding for the network has been agreed for the next 3 years. The governance group approved a multi-year budget for CCN at the April meeting
- The operations framework and strategic plan for the network continues to develop
- Service Improvement Facilitators have been appointed to progress the addressing inequalities and tumour stream / cancer service project work. Shirlee McLean will be focussing on the tumour stream programme. Ali Hamlin comes onboard in July and will be focussing on the Addressing Inequalities programme.

### **CCN General Project update**

- **GP tool for individual prostate screening decision making** – GP workshops have been scheduled to occur over June - Sept 2008 in Wairarapa, Tairawhiti, Hawkes Bay and Whanganui.
- **Cancer Medical Imaging Guidelines** – it was decided at the initial teleconference to use the UK Guidelines: Recommendations for Cross Sectional imaging in Cancer Management as the foundation for this document. The group will meet in July to begin drafting the guidelines to fit with the NZ healthcare setting.
- **Multi-disciplinary Meeting Framework** – A draft framework has been developed and circulated for comment.

### **CCN Regional Hui – 23<sup>rd</sup> June 2008**

The focus of the first CCN hui held in Palmerston Nth was to update attendees about CCN activity including the Addressing Inequalities project and to discuss how CCN and Iwi/Maori can partner into the future. The hui was well attended with around 40 attendees from across most of the CCN regions, with a mix of service providers, clinicians and consumers. Feedback from attendees was positive and there have been expressions of interest for hui to be held in other districts within the region. Notes from the hui and the Addressing Inequalities project scope are included in the appendices.

### **DHB Cancer Managers meeting – 11<sup>th</sup> June 2008**

This was the second meeting for this group of DHB Cancer Plan Managers and Service Managers. It provides a forum for attendees to update on progress with their respective cancer plans, share learnings and to identify opportunities for regional approaches. CCN also sought feedback on its direction of travel and engagement processes. The group was supportive of the general direction of the Network but cautioned about the amount of work CCN activity was generating for service providers and the need for CCN to take this into account when setting timeframes and when communicating, especially via email activity. This group meets 6 monthly.

## **Palliative Care updates**

- **Regional Palliative Care Network Meeting, 18<sup>th</sup> June 2008** -The focus of the agenda was reviewing the activities of the network to date and deciding how it wants to position itself for the future. CCN will work with the group and DHBs to progress the development of local palliative care networks and formalising the regional group.
- **Not For Resuscitation Guidelines for Hospices** – these guidelines have been completed and circulated to regional palliative care stakeholders. An audit of Hospice guidelines will be undertaken in 6mths to assess whether these principles have been consistently applied.
- **Sub-Regional Palliative Care Medical Specialist Model** – MDHB and CCN commenced a project to develop a model for palliative care medical specialist services which strengthens current service provision across Taranaki, Whanganui, MidCentral and Wairarapa. A discussion paper will be circulated to stakeholders in July 2008.
- **Specialist Palliative Care Service Specifications** – From January 2008 DHBs have received funding to scope the implementation of the new service specifications. CCN approached DHBs re assisting with a regional approach to this activity however this is yet to develop. The MOH, representatives of the regional cancer networks and members of the palliative care service specification advisory group will meet to determine how the proposed gap analysis is going to be undertaken.

## **Tumour stream updates**

- **Lung** – The Steering Group met on the 10<sup>th</sup> June to discuss the lung mapping process, audit data and ongoing data collection. Ken Whelan, CEO CCDHB has agreed to the project sponsor role. Patient journey mapping has commenced with DHB stakeholder groups.
- **Head and Neck** – CCN circulated information to stakeholders about the development of a Head and Neck tumour stream and called for interested parties to form a Steering Group.

## **CCN presentation to Cancer Control Council – 17<sup>th</sup> April 2008**

Representatives from CCN presented to the Cancer Control Council about the development CCN and progress to date. The council was complimentary about the rapid development of the network and the breadth of activity that was being undertaken. CCN will be invited to present to the Council on an annual basis.

## **Cancer Control Council Planning and Priority Setting Workshop – 20<sup>th</sup> June 2008**

Members of the CCN management team attended this forum which was aimed at informing attendees about various models of prioritising resources and funding across a programme of work. The Council will disseminate a report from the forum.

## **Cancer Supportive Care Guidelines – national project**

These national guidelines are nearing completion and will be circulated for feedback in August / September 2008 with a final guideline available by the end of 2008. The regional cancer networks have submitted a draft project scope to the MOH to assist with the following implementation activities:

- promoting and educating about the new Supportive Care Guidelines and assist with their adoption
- identifying current providers of supportive care services across the region and the service they provide
- identifying where there are gaps or overlaps in service provision
- identifying areas where inequalities exist with respect to access and availability of services
- facilitating a regional and a national view of the current situation
- promoting best practice

The networks will continue to work with the MOH to develop this process further.

## **Key Focus areas for the next quarter (July - September 2008)**

### **CCN Annual report 07/08**

This is under development and will be available by mid-August. It will be circulated to stakeholders on the database and lodged on the website.

### **CCN General Projects**

- **GP tool for individual prostate screening decision making** – GP workshops will be held in Wairarapa, Tairāwhiti, Hawkes Bay and Whanganui. CCN will work with the MOH on the evaluation of this project as the programme is being considered for national implementation.
- **Cancer Medical Imaging Guidelines** – Guidelines to be drafted and circulated for comment.
- **Multi-disciplinary Meeting Framework** – Feedback on the draft framework will be collated and a final document will be presented to the chairs of the existing multi-disciplinary meetings in the region for approval. Subsequent to this CCN will work with stakeholders to implement these guidelines.

### **Tumour Stream Focus areas**

- **Lung** – mapping of the patients journey for each DHB region will continue with the aim of having the report with findings and recommendations completed by the end of October.
- **Head and Neck** – the Steering Group membership will be confirmed and an initial meeting will be held to discuss the terms of reference and project scope for this group.
- **Colo-rectal (proposed)** – as a result of the decision to commence the national Bowel Screening Programme CCN will approach stakeholders to gauge interest in the establishment of a tumour stream for the region.
- **Skin (proposed)** – CCN will explore facilitating a regional forum to present and discuss regional audit data, models of care and clinical guidelines for the management of skin cancer. Decisions on taking this forward will be influenced by the programme for the national Melanoma Forum on the 13/14<sup>th</sup> November 2008 and stakeholder interest in a regional forum.

### **Addressing Inequalities Focus areas**

- **Maori engagement** – CCN will continue to develop a partnership model via a series of hui around the region, building on the outcomes of the first regional hui. CCN has been invited by local Iwi and the local cancer network to collaborate with a hui in Hawkes Bay on the 11<sup>th</sup> August 2008.
- **Pacific engagement** – CCN is working with stakeholders in the Wellington region to facilitate a regional fono on the 26<sup>th</sup> August. The agenda will include an update on CCN, discussion on the Addressing Inequalities project and developing an ongoing engagement / partnership model which may include looking at ethnic specific approaches for Pasifika. This is with the understanding that Pacific peoples is not a homogenous group but rather made up of a number of different Pacific ethnicities.
- **Addressing Inequalities Project** – CCN will be engaging with regional stakeholders to gain feedback on the project scope and commence information gathering to complete the situational analysis.

### **NZ Regional Cancer Networks Project Teams Orientation – 14<sup>th</sup> August 2008**

All four network project teams will be participating in a one day workshop in Hamilton to discuss a consistent approach and develop common principles around the tumour stream mapping and addressing inequalities project.

### **CCN Cancer Care Coordinators forum – 20<sup>th</sup> August 2008**

Following positive feedback from stakeholders, CCN will facilitate the initial meeting of this forum in Wellington. The programme includes discussing a Care Coordination Framework, the draft Supportive Care Guidelines and what participants want from the forum on an ongoing basis.

## **Patient Management Frameworks Forum – 21/22 August 2008**

This forum is a joint regional cancer networks and MOH initiative to bring together a wide range of stakeholders to discuss the development, implementation and evaluation of the frameworks with a team from Victoria. The intended outcome of the forum is to determine if these frameworks should be adapted / adopted in NZ and if so, to plan how this process can occur.

### **Data Project**

Using the lung cancer pathway as a pilot, this project aims to identify, capture and report on specific clinical and process data points along the patients journey. This work will inform the lung cancer journey mapping project, KPI monitoring and link with existing national cancer data projects.

### **CCN Operations Framework and Strategic Plan Development**

Work will continue on the development of the operations framework. CCN will commence meetings with stakeholders to inform the strategic plan and update the work plan. Health Needs Assessment data for the region will be collated to inform the strategic plan. A draft strategic plan will be available by the end of 2008.

## **Conclusion**

The general direction of CCN activity has evolved to align with two main ongoing work streams:

- Tumour stream activity
- Addressing inequalities activity

The work in these work streams will be supported by guideline and framework development occurring at a regional and national level.

**David Meates**  
**CEO Wairarapa DHB**  
**CCN Sponsor**

**Mike Grant**  
**GM Funding MDHB**  
**CCN Chair**

**Jo Anson**  
**Network Manager**  
**CCN**

## ***Appendices***

1. CCN meeting minutes - 8<sup>th</sup> April 2008, 24<sup>th</sup> June 2008
2. Notes from CCN Hui – 23<sup>rd</sup> June 2008
3. Addressing Inequalities project scope