



## Central Cancer Network (CCN) Work Plan 08/09 January 2009

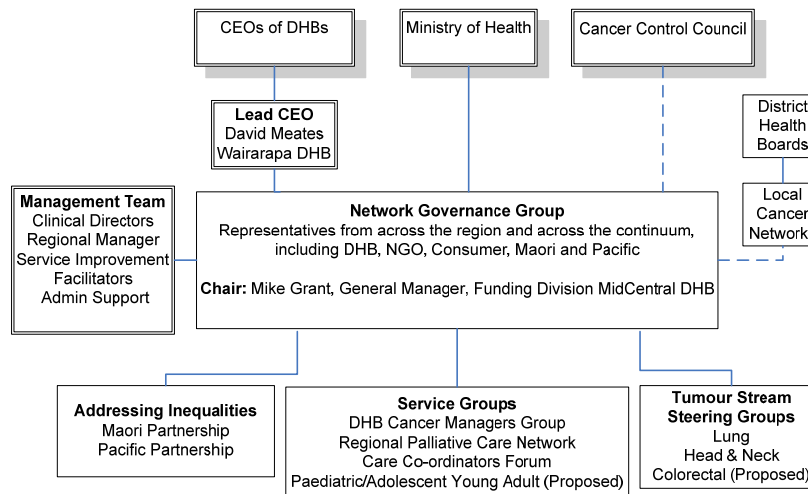
### Introduction

The Central Cancer Network (CCN), established mid 2007, is one of four regional cancer networks established in NZ to facilitate a number of the initiatives contained in the Cancer Control Strategy Action Plan 2005-2010. These initiatives directly relate to the overarching goals of the Cancer Control Strategy 2003, to reduce the impact and incidence of cancer and to reduce inequalities with respect to cancer. The focus of the networks is to undertake leadership, facilitation and co-ordination roles with respect to these initiatives.

The CCN region encompasses the following eight District Health Board areas: Taranaki, Tairāwhiti, Hawkes Bay, Whanganui, MidCentral, Wairarapa, Hutt Valley, Capital and Coast. Note Taranaki, Tairāwhiti and Nelson/Marlborough (Southern Cancer Network) link with adjacent networks as they have significant patient flows going into each.

As CCN has developed over the past year its structure has evolved and the diagram below is more representative of the current direction of travel.

### Central Cancer Network (CCN) Structure



### **Context for the CCN Work Plan 08/09**

The CCN work plan is informed by and supports the following:

- NZ Cancer Control Strategy Action Plan 2005-2010
- DHB Cancer Plans and District Annual Plan priorities
- Ministry of Health cancer control programme
- NZ Regional Cancer Network initiatives
- CCN stakeholder plans and initiatives

### **Reporting on Progress**

CCN provides quarterly reports to all stakeholders, 6 monthly reports to the Ministry of Health and an Annual Report.

Reports are available on the Cancer Control Council website – [www.cancercontrolcouncil.govt.nz](http://www.cancercontrolcouncil.govt.nz)

### **Initiatives for 08/09**

The following tables identify the focus areas and activity which the network will deliver on for 08/09. The initiatives are grouped under the following programme areas:

- Addressing Inequalities programme
- Tumour stream programme
- Service group programme
- General projects
- Network Infrastructure

For more information please contact:

**Jo Anson**  
Manager, Central Cancer Network (CCN)

Ph: 06 350 8622

Email: [jo.anson@midcentraldhb.govt.nz](mailto:jo.anson@midcentraldhb.govt.nz)

## Addressing Inequalities Programme

Key Focus Area	Specific actions	Milestones	Timeframe	Who will do the work
Engagement with Maori	Engagement with stakeholders at a district level to identify actions to improve engagement with Maori and to reduce inequalities	Hawkes Bay engagement process undertaken and draft report provided to stakeholders  Whanganui engagement process undertaken and draft report provided to stakeholders  Taranaki engagement process undertaken and draft report provided to stakeholders  Tairāwhiti engagement process undertaken and draft report provided to stakeholders  <i>Aim to complete this initial process across all CCN DHBs by end of 2009</i>	Dec 08  May 09  May 09  June 09	Addressing Inequalities Service Improvement Facilitator (SIF)
	Facilitate a second regional hui to showcase addressing inequalities initiatives from around the region and update on progress	Regional hui	Apr 09	
Engagement with Pacific Peoples	Facilitate regional fono to update stakeholders on CCN activities and identify a process for ongoing engagement	Regional fono held	Aug 08	Addressing Inequalities SIF
	Engagement with stakeholders at a district level to identify actions to improve engagement with Pacific Peoples and to reduce inequalities	Engagement process to be developed and commenced  <i>Priority DHBs to be determined using HNA data</i>	Feb 09	

Key Focus Area	Specific actions	Milestones	Timeframe	Who will do the work
Partnership with Maori and Pacific Peoples	Outcomes of engagement with Maori and Pacific Peoples re developing a partnership model with CCN are actioned	Partnership model with Maori discussed at regional hui and progressed	Apr 09	Manager
Cervical Screening Services	Stocktake of cervical screening services in region to identify best practice components, including: <ul style="list-style-type: none"> <li>• Contracting</li> <li>• Service delivery models</li> <li>• Health promotion plans</li> <li>• Coverage data</li> </ul>	Report with recommendations completed  Regional forum with providers to develop an implementation plan	Mar 09  Apr 09	Addressing Inequalities SIF
Breast Screening Services	Stocktake of breast screening services in region to identify best practice components, including: <ul style="list-style-type: none"> <li>• Contracting</li> <li>• Service delivery models</li> <li>• Health promotion plans</li> <li>• Coverage data</li> </ul>	Report with recommendations completed  Regional forum with providers to develop an implementation plan	Jun 09  Jul 09	Addressing Inequalities SIF
Cultural Awareness	Work with the Cultural Advisors within the PHOs to develop a Maori cultural awareness package which can be used by service providers to up-skill staff	Package developed and implementation plan agreed	Jun 09	Addressing Inequalities SIF
Addressing inequalities pilot funding	CCN develops an investment strategy for allocating 08/09 funding which has been designated to support addressing inequalities pilot projects within the region	A process for allocation of \$73K addressing inequalities pilot funding for 08/09 is agreed by the Governance Group and implemented	Feb 09	Manager

## Tumour Stream Programme

Key Focus Area	Specific actions	Milestones	Timeframe	Who will do the work
Tumour Stream Development	Work with the NZ Regional Cancer Networks / Cancer Treatment Advisory Group / Ministry of Health to develop an agreed approach to the establishment of tumour streams in NZ	Approach agreed  <i>Depending on the approach agreed CCN may need to review its proposed tumour stream activity</i>	Dec 08	Manager / Clinical Directors (CDs)
Lung	Identify the current pathway for patients diagnosed with lung cancer in the region and identify opportunities for improving the patients journey	Mapping of secondary cares services completed and retrospective lung pathway data collated  Patient experience captured  Develop plan to inform service providers of service gaps and recommended actions and work with providers to implement	Nov 08  Dec 08  Feb 09 onwards	Tumour Stream SIF
Head and Neck	Identify the current pathway for patients diagnosed with Head and Neck cancer in the region and identify opportunities for improving the patients journey	Confirm steering group membership and TOR  Assess options for optimising the functioning of the RCTS Head and Neck Multidisciplinary Meetings (MDM)  Identify the various options for the capturing and reporting of clinical data  Mapping of secondary cares services completed and retrospective head and neck pathway data collated  Patient experience captured  Develop plan to inform service providers of service gaps and recommended actions and Work with providers to implement	Aug 08  Feb 09  Feb 09  Feb – Apr 09  May 09  Jun 09 Onwards	Manager / CDs MCH MDM Coordinator  Tumour Stream SIF

Key Focus Area	Specific actions	Milestones	Timeframe	Who will do the work
Colorectal (proposed)	Engage with stakeholders to gauge the interest in the establishment of a Colorectal Tumour Stream	Engagement undertaken	Mar 09	Manager /CDs
Skin	Collate and disseminate an information package to inform stakeholders of service improvement opportunities for managing patients with skin cancer	Information package collated and disseminated via local cancer networks	Mar 09	Tumour Stream SIF

### Service Group Programme

Key Focus Area	Specific actions	Milestones	Timeframe	Who will do the work
Central Region Palliative Care Network (CRPCN)	Facilitate regular meetings	Meetings are held 3-4 monthly	ongoing	CCN Team
	District palliative care networks are established across the region and the regional network is formalised	Develop guidelines / TORs to support the development of the district and regional networks	Nov 08	<i>(potential for proposed Network nursing advisor positions to support this forum)</i>
		Engage with stakeholders to progress	Nov 08	
	Support palliative care strategic planning in the region and the CRPCN to develop a plan to guide their activity	Palliative care strategic planning workshop held	Dec 08	
		CRPCN plan completed	Jun 09	
	Specialist palliative care service specifications are scoped and implemented in the region	Continue engaging with stakeholders and monitor the progress of the MOH gap analysis	ongoing	
Regional palliative care medical specialist model is developed and implemented	Model developed and agreed	Nov 08	MDHB contractor	
	Regional business case for those DHBs requiring this support is developed	Dec – Feb 08		
	Subject to business case approval, implementation commences	Feb 09		

Key Focus Area	Specific actions	Milestones	Timeframe	Who will do the work
	Apply for Genesis Oncology Trust funding to progress the following projects: <ul style="list-style-type: none"> <li>• Palliative Care Service directory</li> <li>• Benchmarking and audit framework</li> <li>• Regional nursing workforce development</li> </ul>	Application developed and submitted to Genesis Project scopes developed and project manager identified Projects completed (subject to funding )	Aug 08 Dec 08 Jun 09	Project Manager ( subject to Genesis funding)
Paediatric / Adolescent Young Adult services	Engage with stakeholders re the establishment of a regional group to facilitate Paediatric Oncology and Adolescent Young Adult services within the region	Approach agreed  <i>Next steps TBA - dependant on decision re approach</i>	Feb 09	Manager / CDs
Care coordinators forum	Service providers that undertake a care coordination role meet regularly to share information and identify and develop opportunities for regional approaches	Regular forums are held 3-4 monthly  <i>(potential for proposed Network Nursing Advisor positions to support this forum)</i>	ongoing	CCN Team
DHB cancer managers group	DHB cancer plan managers (funder) and cancer service managers (provider) meet regularly to share information and identify and develop opportunities for regional approaches	Regular forums are held 6 mthly	ongoing	CCN Team
CCN governance group	Governance group meet regularly to plan and monitor progress of the Network	Regular meeting are held every 6-8 weeks	ongoing	CCN Team
	Develop a strategic plan for CCN to guide its activities through to 2010	Regional Cancer HNA report completed Draft strategic plan developed Engagement with stakeholders on draft strategic plan Strategic plan finalised	Nov 08 Dec 08 Feb-Apr 09 Jun 09	TAS CCN Team

Key Focus Area	Specific actions	Milestones	Timeframe	Who will do the work
Local Cancer Networks (LCN)	CCN engages regularly with Local Cancer Networks to update on activity, provide support and identify opportunities for regional approaches	CCN team regularly attend LCN meetings across the region	Ongoing	CCN Team

## General Projects

Key Focus Area	Specific actions	Milestones	Timeframe	Who will do the work
Multidisciplinary meetings (MDM)	A framework to support the functioning of MDM across the region is developed and implemented	MDM Chairs endorse framework Implementation plan developed and agreed Implementation plan completed	Sept 08 Jan 09 Jun 09	Tumour Stream SIF
Early Detection Testing for Prostate Cancer (Genesis Oncology Trust)	A pilot training programme is delivered to GPs to support the use of the GP / Patient showcard that supports informed decision making on early detection testing for prostate cancer	GP Training sessions completed in Wairarapa, Whanganui, Hawkes Bay, Tairāwhiti Evaluation process developed and completed Final report to Genesis Oncology Trust	Nov 08 Mar 09 Apr 09	Tumour Stream SIF
Cancer Medical Imaging Guidelines	Guidelines to support the best use of medical imaging modalities for the diagnosis, staging and surveillance of cancer are developed and implemented	Draft guideline completed and circulated to advisory group for confirmation Guideline circulated to wider stakeholders for comment and endorsement Implementation plan developed and commenced	Nov 08 Feb - Mar 09 Apr 09	Tumour Stream SIF
Pathology Service Guidelines	Guidelines to support the best use of pathology testing and reporting for the diagnosis and staging of cancer are	Engage with stakeholders to develop the project scope <i>Next steps TBA - dependant on project scope</i>	Apr 09	Manager / CDs

Key Focus Area	Specific actions	Milestones	Timeframe	Who will do the work
	developed and implemented			
Clinical Trials	Undertake a situational analysis of clinical trial activities across the region to identify areas for improvement and opportunities to inform and support advancement of clinical trial research.	Stakeholders engaged to develop and agrees the project scope  Report completed	Dec 08  Feb 09	Contractor
Patient Management Frameworks	MOH / NZRCN investigate the benefits of developing a patient management framework approach in NZ to support service improvement	MOH / NZRCN facilitate a national forum to consider patient management frameworks for NZ  Project initiation phase  <i>Next steps TBA - dependant on agreed approach</i>	Aug 08  Jun 09	MOH / NZRCN
Supportive Care Guidance	National Supportive Care Guidance is developed and implemented to improve the quality of life for people affected by cancer by improving access to and the quality of supportive care	CCN submission on draft guidance provided  Scope of network involvement in the implementation of the guidelines agreed  <i>Next steps TBA - dependant on agreed approach</i>	Oct 08  Feb 09	CCN Team  <i>MOH to fund project support</i>
Radiation Oncology	Engage with RCTS and WBCC to determine the approach to the implementation of the radiation oncology capacity sharing and Private / Public protocols	Engage with stakeholders re approach  <i>Next steps TBA - dependant on agreed approach</i>	Feb 09	Manager / CDs
<p><i>Implementation of the following guidelines lend themselves to involvement by the networks but would require additional resource for them to be facilitated:</i></p> <ul style="list-style-type: none"> <li>• <i>Melanoma Guidelines</i></li> <li>• <i>Suspected Cancer in Primary Referral guidelines</i></li> <li>• <i>Early Stage Breast Cancer Guidelines</i></li> </ul>				

## Network Infrastructure

Key Focus Area	Specific actions	Milestones	Timeframe	Who will do the work
Consumer Representation	CCN develops and implements a consumer framework, based on nationally agreed principles, to support consumer engagement	Principles for supporting consumer engagement are developed by NZRCN  CCN consumer framework developed and implemented	Mar 09  Apr 09	Manager
Primary engagement	CCN develops and implements a primary sector engagement framework, based on nationally agreed principles	Principles for supporting primary engagement are developed by NZRCN  CCN primary engagement framework developed and implemented	May 09  Jun 09	Manager / CDs
Regional Nurse Advisor Positions (proposed)	The MOH have proposed the development of regional Cancer and Palliative Care nurse advisor positions to support nursing education and professional development	Consult with stakeholders on proposed positions and feedback to the MOH  <i>?Establish positions (dependant on outcome of consultation and implementation timeframes)</i>	Nov 08	Manager
Communication	CCN communication processes are enhanced	CCN website is developed  Quarterly Newsletters are commenced	Apr 09  Mar 09	Support Coordinator
Key Indicators	CCN works with stakeholders to develop an outcomes monitoring framework to assist with local, regional and national planning	Work with stakeholders to develop and implement an outcomes monitoring framework	Jun 09	Manager / CDs