



# Central Cancer Network (CCN) Work Plan 09/10

Oct 2009

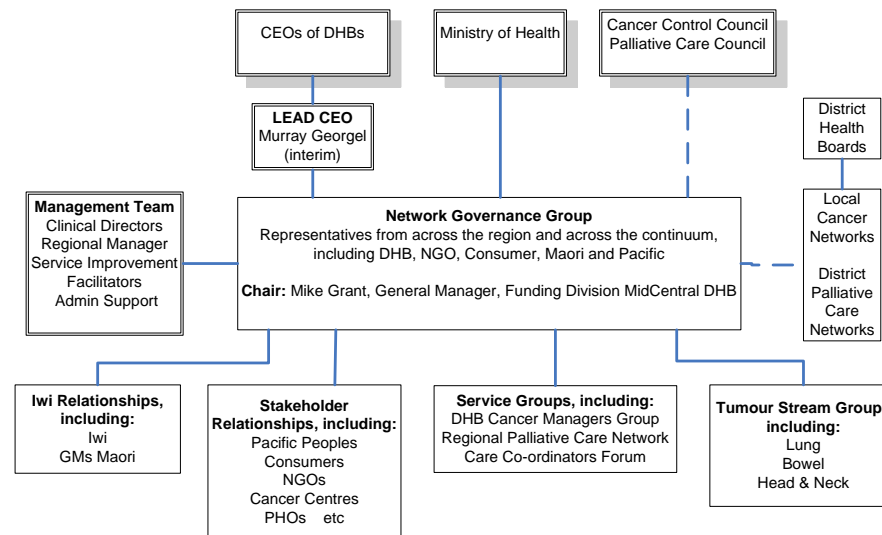
## Introduction

The Central Cancer Network (CCN), established mid 2007, is one of four regional cancer networks established in NZ to facilitate a number of the initiatives contained in the Cancer Control Strategy Action Plan 2005-2010. These initiatives directly relate to the overarching goals of the Cancer Control Strategy 2003, to reduce the impact and incidence of cancer and to reduce inequalities with respect to cancer. The focus of the networks is to undertake leadership, facilitation and co-ordination roles with respect to these initiatives.

The CCN region encompasses the following eight District Health Board areas: Taranaki, Tairāwhiti, Hawkes Bay, Whanganui, MidCentral, Wairarapa, Hutt Valley, Capital and Coast. Nelson/Marlborough (Southern Cancer Network) also links with CCN activity for specific patient flows into the central region. Similarly Taranaki and Tairāwhiti link to Midland Cancer Network as appropriate.

As CCN has developed over the past two years its structure has evolved. The diagram below represents the current situation.

Central Cancer Network (CCN) Structure (Aug 2009)



## Context for the CCN Work Plan 09/10

### *NZ Cancer Control Strategy Action Plan 2005-2010*

This plan identifies activities which span the cancer control continuum aimed at reducing the incidence and impact of cancer and reducing inequalities with respect to cancer. With respect to the cancer control continuum CCN uses the following considerations to guide the types of activities it undertakes:

CCN actively works on:	CCN positively influences:
Goal 3: Diagnosis and Treatment	Goal 1: Prevention
Goal 4: Support, Rehabilitation and Palliative Care	Goal 2: Early Detection and Screening
Goal 5: Service Delivery	Goal 3: Research and Surveillance

### *09/10 Priorities for the National Cancer Control Programme*

The following priorities for 2009/10 have been signalled to the regional cancer networks and DHBs:

- o Continuing to build and strengthen relationships with regional cancer networks
- o Focussing service improvement activities to deliver measurable improvements in the management of patients with Lung or Bowel cancer
- o Meeting the Radiation Oncology waiting time target and developing wait time indicators for chemotherapy and surgical oncology
- o Capital planning eg linear accelerators
- o Workforce planning – linking into wider work force projects
- o Cancer and Palliative Care Information project – continuing to develop and implement the national project
- o Palliative care – boosting Hospice funding initiative and Specialist Palliative Care Service Specification gap analysis and ongoing development

### *Stakeholder Cancer and Palliative Care annual and strategic plan priorities*

This plan seeks to support stakeholders to deliver against cancer control priorities that have been identified in their regions / organisations

### *NZ Regional Cancer Network initiatives*

This plan seeks to identify opportunities for sharing and aligning activities amongst the four cancer networks

### *Crown Funding Agreement requirements*

This plan delivers against the service requirements identified within the Crown Funding Agreement for networks

### *Regional Clinical Service Plan*

This plan aligns with and supports the regional work programme relating to cancer services

**CCN Strategic Plan**

This plan builds on CCN activities to date and aligns with the following vision and strategic priorities of the Network:

<b>Vision</b>		
The Network's vision is improved cancer prevention and control through increased regional collaboration not constrained by organisational, service or professional boundaries.		
<b>Strategic Priority 1 Knowledge and information sharing</b>	<b>Strategic Priority 2 Quality improvement</b>	<b>Strategic Priority 3 Infrastructure development</b>
<p>CCN will:</p> <ul style="list-style-type: none"> <li>▪ Support informed decision making at all levels in communities and organisations;</li> <li>▪ Promote evidence based best practice; by</li> </ul> <p>1.1 Developing and maintaining cancer control service directories</p> <p>1.2 Disseminating and promoting national and regional guidelines and pathways</p> <p>1.3 Monitoring new developments and sharing information on research, new and best practice initiatives with stakeholders</p>	<p>CCN will:</p> <ul style="list-style-type: none"> <li>▪ Support quality improvement across the cancer control continuum;</li> <li>▪ Support providers to develop 'Better, sooner, more convenient services' across the cancer pathway; by</li> </ul> <p>2.1 Developing and supporting clinical governance groups to lead quality improvement across the region</p> <p>2.2 Undertaking a tumour stream approach to identify and address issues along the patients pathway for the common cancers</p> <p>2.3 Supporting the implementation of best practice guidelines and standards</p> <p>2.4 Working with national stakeholders to develop new guidelines and standards to support quality improvement</p> <p>2.5 Facilitating regional quality improvement initiatives which focus on a systematic approach to addressing inequalities</p>	<p>CCN will:</p> <ul style="list-style-type: none"> <li>▪ Support improved planning, collaboration, coordination and integration of services;</li> <li>▪ Provide a responsive infrastructure; by</li> </ul> <p>3.1 Growing the networks in the region to maximise their effectiveness</p> <p>3.2 Promoting the alignment of cancer control planning across the region</p> <p>3.3 Shaping the network's information systems capacity for regional service planning, audit, monitoring and evaluation</p> <p>3.4 Working with the regional cancer networks and other national stakeholders to identify opportunities for alignment, collaborative activities and promoting consistency of approach</p>

## Initiatives for 09/10 - at a glance

Goal 1 Prevention	Goal 2 Screening / Early Detection	Goal 3 Diagnosis / Treatment	Goal 4 Supportive Care / Palliative Care	Goal 5 Service Delivery	Goal 6 Research
Integrated Health Promotion Planning scoping	Cervical Screening services stocktake	Multi-Disciplinary Meeting Framework implementation	Regional Palliative care Medical Specialist project	HVDHB/CCDHB – Pacific translations for patient information and service directory pilot	
	Monitoring breast screening projects	Cancer Medical Imaging Guidelines implementation	Mary Potter Hospice – development of generalist palliative care services for Maori and Pacific pilot	Guideline Implementation planning for Breast, Melanoma, Suspected cancer in primary	
	Te Aitanga a Hauiti Hauora – Breast Screening pilot		Care coordination stocktake process	Supporting Cancer Society Maori responsiveness planning	
			Supportive care services directory	Cancer Centre Collaboration project	
			Integrating cancer society support services into the patient pathway		
			Patient hand-held record project		
			Monitoring travel and accommodation projects		
Demystifying Cancer for Maori programme					
Addressing Inequalities pilot funding process 2009/10					
Tumour Stream Programme - Lung / Bowel / Head and Neck					
Service Group programme – Central Region Palliative Care Network / Care Coordinators Forum / DHB Cancer Managers Group Consumer Representatives Group / Local Cancer Networks / CCN Governance Group					
Operations and Quality Framework – Data projects / project methodologies / communication processes / infrastructure development / cultural frameworks and Tikanga / utilisation of Whanau Ora Health Impact Assessment					
Pacific Communities Plan					

## Delivering Outcomes

The CCN Work Plan 2009/10 supports cancer service planners and providers across the region to address identified issues and deliver against the following Cancer Control Strategy Action Plan (CCSAP) 2005-2010 outcomes:

Issue	Proposed activities for 09/10	Expected outcome as referenced to the CCSAP
Variable engagement with Maori	<ul style="list-style-type: none"> <li>Demystifying Cancer for Maori programme</li> <li>Development of a regional forum to support ongoing relationships with Maori</li> <li>Supporting local cancer networks to function effectively</li> <li>Supporting Cancer Society Maori responsiveness plans</li> <li>Cultural frameworks and Tikanga guidelines</li> </ul>	<p>95 Appropriate and effective governance models are developed to address Maori inequalities in access and outcomes</p> <p>96 Services across the cancer control continuum are appropriately focussed towards Maori priorities and reducing cancer related inequalities</p> <p>100 Improved information for, and communication with, Maori communities</p>
Variable engagement with Consumers	<ul style="list-style-type: none"> <li>Consumer framework</li> <li>Regional consumer forum</li> </ul>	<p>103 Increased consumer participation and opportunities for consumer representatives to be actively involved in cancer control activities at local, regional and national levels</p> <p>104 Increased opportunities for organisations to seek consumer involvement</p> <p>105 All groups involved with cancer control and related work are committed to working with consumers and are able to demonstrate this in practice. They will also have Maori and Pacific expertise that is appropriately supported</p> <p>106 All consumer representatives involved with cancer control groups and related activities have the appropriate experience and/or training so that they are well prepared to be effective and knowledgeable representatives</p> <p>107 Consumer involvement will be based on a consumer-centred model</p>
Variable access to supportive care services for patients	<ul style="list-style-type: none"> <li>Demystifying Cancer for Maori programme</li> <li>Care Coordination stocktake tool</li> <li>Addressing inequalities pilot funded projects</li> <li>Development of service directories</li> <li>HVDHB/CCDHB – addressing inequalities project</li> <li>Integrating Cancer Society services into the patient pathway project</li> <li>Consideration of a regionally supported patient hand-held record</li> </ul>	<p>97 A case management approach is in place for Maori patients from commencement of treatment</p> <p>74 Information for consumers with cancer will be comprehensive, evidence-based and reflect an integrated approach, combining self-help, CAM, and biomedical information</p> <p>73 Consumers have access to quality cancer-related information that meets the national standard</p> <p>64 Reduction in variations in practice in the provision of resources for support and rehabilitation</p> <p>68 Easy access to a database of resources available in each network for patients, families and professional staff</p> <p>56 Patients empowered to negotiate their way through the services and to make informed choices</p> <p>57 Improved care in the community setting</p> <p>55 A co-ordinated and seamless cancer journey for the patient</p>

Issue	Proposed activities for 09/10	Expected outcome as referenced to the CCSAP
Fragmented planning and development of cancer service	<ul style="list-style-type: none"> <li>• Ongoing support of the service groups</li> <li>• Integrated health promotion planning project</li> <li>• Promoting use of the Whanau Ora Health Impact Assessment tool</li> <li>• Identifying data requirements and developing processes to report on key indicators</li> </ul>	98 Decisions about policy and funding address inequalities and Maori priorities in cancer control 82 Improved communication, integration and co-ordination of cancer services between patients, family/whanau and services
Variable collaboration between cancer services	<ul style="list-style-type: none"> <li>• Demystifying Cancer for Maori programme</li> <li>• Cancer Centre Collaboration project</li> <li>• Supporting local cancer networks to function effectively</li> </ul>	55 A co-ordinated and seamless cancer journey for the patient 49 There is increased participation in clinical trials
Variable levels and standards of service delivery across the region impacting on quality, timeliness and accessibility of services for patients	<ul style="list-style-type: none"> <li>• Tumour stream approach for lung, bowel and head &amp; neck cancers</li> <li>• Multi-Disciplinary Meeting Framework implementation</li> <li>• Cancer Medical Imaging Guideline implementation</li> <li>• Cancer Centre collaboration project</li> <li>• Cervical screening report</li> <li>• Monitoring breast screening projects including Te Aitanga a Hauiti Hauora addressing inequalities project</li> <li>• Identification of and development of systems to report on appropriate indicators</li> <li>• Implementation planning for national guidelines</li> <li>• Pacific peoples work plan</li> </ul>	55 A co-ordinated and seamless cancer journey for the patient 49 There is increased participation in clinical trials 50 Seamless and patient-centred care is provided, avoiding fragmentation and duplication 48 There is regional and national consistency of cancer diagnosis and treatment 47 Patients have appropriate access to a multidisciplinary team approach throughout their continuum of care 46 Cancer diagnosis and treatment are provided to defined standards and quality 45 Improved access to diagnosis and treatment for those with recognised disadvantage, such as Maori and Pacific people who have lower cancer survival 44 Prompt presentation and timely diagnosis and treatment for all patients with suspected cancer
Workforce sustainability	<ul style="list-style-type: none"> <li>• Regional palliative care medical specialist project</li> <li>• Mary Potter Hospice – addressing inequalities pilot</li> <li>• Care Coordination resources stocktake</li> <li>• Cancer Centre Collaboration project</li> <li>• Tumour stream approach for lung, bowel and head &amp; neck cancers</li> </ul>	93 Increased recruitment and retention of palliative care workers to provide an integrated and comprehensive service throughout NZ 94 A workforce is available to meet the needs of rehabilitation and support services for cancer patients and their whanau 81 Palliative care services will be appropriately resourced and delivered 77 Access to palliative care for people with cancer from specific underserved populations

## Measuring Progress

The Ministry of Health and the regional cancer networks are currently developing an outcomes monitoring framework. CCN has identified the following suite of indicators for reporting for 09/10.

<b>Activities and Outputs</b> These are key process level indicators which align to the network's annual work programme and are expected to contribute to improvements in intermediate outcomes		
<b>Collaboration in Action Indicators</b> <ul style="list-style-type: none"> <li>No. of Demystifying Cancer for Maori Hui held in the region</li> <li>No. of districts which have undertaken a stock take of their care coordination resources</li> <li>Breadth of consumer representation activity</li> </ul>		
<b>Guideline Implementation Indicators</b> <ul style="list-style-type: none"> <li>Multi-disciplinary Meetings Framework – audit results</li> <li>Cancer Medical Imaging Guidelines - audit results</li> </ul>		
<b>Intermediate Level Outcomes</b> These are indicators which measure the performance of a system in the medium term. They reflect the themes of 'improve services' and 'increase system efficiencies'. Details of indicators will depend on the focus of the work programme in any given year and will align with the strategic plan.		
<b>Indicator</b>	<b>Target</b>	<b>Measurement Timeframe</b>
Wait times from referral to first treatment for lung cancer patients (excludes inpatients and acute admissions) - by DHB, by ethnicity	To be determined	Baseline required by end of quarter 4
Wait times from referral to first treatment for bowel cancer patients (excludes inpatients and acute admissions and those people not diagnosed with bowel cancer) - by DHB, by ethnicity	To be determined	Baseline required by end of quarter 4
Proportion of lung cancer patients accessing MDM - by DHB	To be determined	End of quarter 4
Proportion of bowel cancer patients accessing MDM - by DHB	To be determined	End of quarter 4
Regional Cancer Control Indicators Report will include a suite of indicators and targets including: <ul style="list-style-type: none"> <li>Prevention – tobacco control, breast feeding, HPV vaccination uptake</li> <li>Screening – breast and cervical coverage rates</li> <li>Radiation oncology waiting times</li> <li>Medical oncology waiting times</li> </ul>	To be determined – mixture of national, regional and district targets	Six monthly

## Reporting on Progress

CCN is required to report progress to the Ministry of Health 6 monthly (end of Quarter 2 and end of Quarter 4). These reports, along with additional information on CCN activities, are available on the Central Cancer Network website – [www.centralcancernetwork.org.nz](http://www.centralcancernetwork.org.nz) (available from Oct 09). A quarterly newsletter will also be initiated to support ongoing communication.

The following section provides details on the individual projects, milestones and timeframes, grouped under the following programme areas:

- Addressing Inequalities programme
- Tumour stream programme
- General projects
- Service group programme
- Infrastructure development

For more information please contact:

**Jo Anson**

Manager, Central Cancer Network (CCN)

Ph: 06 350 8622

Email: [jo.anson@midcentraldhb.govt.nz](mailto:jo.anson@midcentraldhb.govt.nz)

## Addressing Inequalities Programme

To note, whilst this section identifies specific activities to be undertaken to address inequalities, a focus on addressing inequalities is embedded across all of the network's activities.

Key Focus Area	Specific actions	Milestones	Timeframe	Who will do the work
<b>Engagement with Iwi/Maori</b>  Strategic Plan ref: 2.5, 3.1	Engagement with stakeholders at a district level to identify actions to improve relationships with Iwi/Maori and to reduce inequalities  <i>Hawkes Bay, Whanganui, Taranaki commenced in 08/09. Complete this initial process across all CCN DHBs</i>	Focus areas: <ul style="list-style-type: none"> <li>Demystifying Cancer for Maori programme</li> <li>Development of a forum to support ongoing relationships</li> </ul>	Jul 09 – Jun 10	Addressing Inequalities Service Improvement Facilitator (SIF)
<b>Engagement with Pacific Communities</b>  Strategic Plan ref: 2.5, 3.1	Complete pre-engagement work, including: <ul style="list-style-type: none"> <li>Gathering information to describe the characteristics of Pacific communities in the region</li> <li>Stocktake of current strategies to address inequalities for Pacific communities</li> <li>Identify and make initial contact with key Pacific community representatives</li> <li>Stocktake of research on Pacific communities and cancer</li> </ul>	Pre-engagement work completed Report compiled	Jun 09 – Sep 09	Addressing Inequalities (Pacific) SIF
	Develop a plan based on the information gathered during the pre-engagement phase	Plan developed and commenced  <i>Additional milestones to be determined at this stage</i>	Sept 09	
<b>Screening Services</b>  Strategic Plan ref: 1.3, 2.5	Stocktake of cervical screening services in region to identify best practice components, including: <ul style="list-style-type: none"> <li>Contracting</li> <li>Service delivery models</li> </ul>	Report with findings and recommendations completed  Support the development of implementation plans to deliver against	Aug 09  Sep 09	Addressing Inequalities SIF

Key Focus Area	Specific actions	Milestones	Timeframe	Who will do the work
	<ul style="list-style-type: none"> <li>Health promotion plans</li> <li>Coverage data</li> </ul>	the recommendations		
	<p>Monitor the outputs of the following Breast Screening projects and consider if there is a role for CCN in any implementation activities:</p> <ul style="list-style-type: none"> <li>NSU Maori Monitoring Report</li> <li>BreastScreen Coast to Coast stocktake</li> <li>Midland Cancer Network project</li> </ul>	<i>To be determined</i>	<i>To be determined</i>	Addressing Inequalities SIF
<p><b>Whanau Ora</b></p> <p>Strategic Plan ref: 2.3, 2.5</p>	CCN assists providers to plan and deliver services which support Maori families to achieve their maximum health and wellbeing	<p>Focus areas:</p> <ul style="list-style-type: none"> <li>Cultural frameworks and Tikanga guidelines</li> <li>Supporting Cancer Society Maori responsiveness planning</li> <li>Utilisation of Whanau Ora Health Impact Assessment tool</li> </ul>	Jun 10	Addressing Inequalities SIF
<p><b>Addressing inequalities pilot funding</b></p> <p>Strategic Plan ref: 2.5</p>	<p>CCN works alongside the providers for the following addressing inequalities pilot projects:</p> <ul style="list-style-type: none"> <li><b>HVDHB / CCDHB</b> – Pacific translations for patient information and service directory development</li> <li><b>Te Aitanga a Hauiti Hauora</b> – targeted approach to support increased Breast Screening rates in Tairāwhiti</li> <li><b>Mary Potter Hospice</b> – development of generalist palliative care services for Maori and Pacific</li> </ul>	Projects to be completed and evaluated during 09/10	Jun 09 – Jun 10	Addressing Inequalities SIFs
	CCN develops an investment strategy for allocating 09/10 funding allocated in the budget to support addressing inequalities pilot projects within the region	<p>Process is agreed by the Governance Group</p> <p>Process implemented</p>	<p>Sep 09</p> <p>Oct 09</p>	Manager

Key Focus Area	Specific actions	Milestones	Timeframe	Who will do the work
<b>Supportive Care Guidance</b>  Strategic Plan ref: 1.1, 1.2, 1.3, 2.2, 2.3, 2.5, 3.2	National Supportive Care Guidance (currently in draft) is implemented to improve the quality of life for people affected by cancer by improving access to and the quality of supportive care	Focus areas for 09/10: <ul style="list-style-type: none"> <li>Working with MoH to develop an implementation plan</li> <li>Development of a Supportive Care Directory for the region</li> <li>Development of a care co-ordination stocktake process to assist districts to identify current care co-ordination coverage and opportunities for improvement</li> <li>Integrating Cancer Society Support Services into patient pathways</li> <li>Consideration of a regional hand-held patient record</li> <li>Travel and accommodation support – monitoring outcomes from SCN, NCN and TAS projects to determine next steps</li> </ul>	Jun 10	CCN Team
<b>Integrated Health Promotion Planning</b>  Strategic Plan ref: 3.2	CCN supports the development of integrated health promotion planning by developing or promoting a methodology to assist the process. <i>Link with Health Promotion Forum, public health units, DHB Planning and Funding</i>	Project scoped and stakeholder support gained  <i>Subject to the above - methodology developed and disseminated</i>	Feb 10	Addressing Inequalities SIF

### Tumour Stream Programme

Key Focus Area	Specific actions	Milestones	Timeframe	Who will do the work
<b>Multi-Disciplinary Meetings (MDM)</b>  Strategic Plan ref: 1.2, 2.2, 2.3, 2.5	A framework to support the functioning of MDM across the region is developed and implemented	Implementation plan completed  Focus on Lung and Bowel MDM development	Nov 09  Jun 10	Tumour Stream SIF

Key Focus Area	Specific actions	Milestones	Timeframe	Who will do the work
<b>Cancer Medical Imaging Guidelines</b>  Strategic Plan ref: 1.2, 2.2, 2.3, 2.5	Guidelines to support the best use of medical imaging modalities for the diagnosis, staging and surveillance of cancer are developed and implemented	Draft guideline completed  Guideline circulated to wider stakeholders for comment and endorsement  Implementation plan developed and commenced	Aug 09  Aug 09  Sept 09	Tumour Stream SIF
<b>Lung Cancer Tumour Stream</b>  Strategic Plan ref: 2.1, 2.2, 2.3, 2.4, 2.5	Following on from the dissemination of the regional lung cancer report (April 2009) service improvement plans are developed to deliver against the recommendations at district and regional levels	Engage with each DHB using a road show approach to inform stakeholders about implementation activities  Facilitate regional activity around the following focus areas: <ul style="list-style-type: none"> <li>• High impact change areas: referral, diagnosis, treatment planning and follow-up</li> <li>• Data to monitor the pathway and to support clinical audit</li> <li>• Care coordination</li> <li>• Guideline implementation</li> </ul>	Oct 09  Jul 09 onwards	Tumour Stream SIF / CD
<b>Bowel Cancer Tumour Stream</b>  Strategic Plan ref: 2.1, 2.2, 2.3, 2.4, 2.5	Identify the current pathway for patients diagnosed with Bowel cancer in the region and identify opportunities for improving the patients journey	Steering Group appointed  Mapping of secondary care services, analysis of retrospective bowel pathway data and capturing of patient experience information completed Report provided to stakeholders identifying the findings from the mapping process and patient experience exercises  Implementation approach to be developed and commenced	Jul 09  Jul-Sep 09  Nov 09  Feb 10	Tumour Stream SIF / CD

Key Focus Area	Specific actions	Milestones	Timeframe	Who will do the work
<b>Head and Neck Tumour Stream</b>  Strategic Plan ref: 2.1, 2.2, 2.3, 2.4, 2.5	An issues based approach will be taken for Head and Neck cancer to identify opportunities for improving the patients journey	Focus areas: <ul style="list-style-type: none"> <li>• Data collection to identify relevant issues within the pathway</li> <li>• MDM development eg referral guidelines</li> <li>• Identification via literature / research high impact changes for Head and Neck cancer</li> <li>• Supportive care</li> </ul>	Jul 10	Tumour Stream SIF / CD

## General Projects

Key Focus Area	Specific actions	Milestones	Timeframe	Who will do the work
<b>Cancer Centre Collaboration</b>  Strategic Plan ref: 2.2, 2.5, 3.1, 3.2, 3.3	CCN supports a collaborative service approach between the two cancer centres, maximising strengths and mitigating risks, to ensure high quality, timely services are available to patients across the region Focus areas are likely to include: <ul style="list-style-type: none"> <li>• Capital planning</li> <li>• Wait time management</li> <li>• Clinical Governance</li> <li>• Sub-specialty opportunities</li> <li>• Clinical protocol alignment</li> <li>• Work force opportunities</li> <li>• Populations on the margins</li> <li>• Optimising funding mechanisms</li> <li>• Access to clinical trials</li> <li>• Private service provision</li> </ul> <i>Activities will align with and support the developing Regional Clinical Services Plan regional work programme</i>	Engage with key stakeholders to determine the approach to be taken  Project scope completed  <i>Next steps dependant on final project scope</i>	Nov 09  Jan 10	Clinical Directors / Manager  Contractor

Key Focus Area	Specific actions	Milestones	Timeframe	Who will do the work
<b>Sub-regional Palliative Care Medical Specialist</b>  Strategic Plan ref: 2.3	Facilitate the implementation of a joint Palliative Care Medical Specialist service for Taranaki, Wanganui and MidCentral	Contracting processes are developed to support the service to commence on 1 <sup>st</sup> September 2009	Jun-Sept 09	Manager
<b>Guideline implementation plans</b>  Strategic Plan ref: 1.2, 2.3, 3.4	CCN to work with a consortium of organisations led by NZ Guidelines Group to develop implementation plans for the following guidelines: <ul style="list-style-type: none"> <li>• <i>Melanoma Guidelines</i></li> <li>• <i>Suspected Cancer in Primary Referral guidelines</i></li> <li>• <i>Early Stage Breast Cancer Guidelines</i></li> </ul>	Implementation plans developed  Work with providers to incorporate identified implementation activities into their 10/11 planning	Feb 10  Mar 10	Manager / CDs

### Service Group Programme

Key Focus Area	Specific actions	Milestones	Timeframe	Who will do the work
<b>Central Region Palliative Care Network (CRPCN)</b>  Strategic Plan ref: 1.3, 2.1, 3.1	Facilitate regular meetings of this forum to share information about palliative care service development across the region and to identify opportunities for collaborative approaches	Meetings are held 3-4 monthly	ongoing	CCN Team
<b>Care Coordinators Forum</b>  Strategic Plan ref: 1.3, 2.1, 3.1	CCN supports those service providers that undertake a care coordination role to share information and identify and develop opportunities for regional approaches	Regularly communicate with this group to identify opportunities for forums, engaging with the wider CCN work programme and to share information	ongoing	CCN Team
<b>DHB Cancer Managers Group</b>  Strategic Plan ref: 1.3, 2.1, 3.1, 3.2	DHB cancer managers (Funder and Provider) meet regularly to share progress against their respective cancer plans and to identify and develop opportunities for regional approaches	Regular forums are held 6 mthly	ongoing	CCN Team

Key Focus Area	Specific actions	Milestones	Timeframe	Who will do the work
<b>Consumer Representatives</b>  Strategic Plan ref: 1.3, 3.1	Consumer representatives are supported to contribute to the planning and delivery of cancer services	<ul style="list-style-type: none"> <li>Regular communications</li> <li>Identify and promote opportunities for consumers to engage with service improvement opportunities</li> <li>Regional forum</li> </ul>	ongoing	CCN Team
<b>Local Cancer Networks (LCN)</b>  Strategic Plan ref: 1.3, 2.1, 3.1, 3.2	CCN engages regularly with Local Cancer Networks to update on activity, provide support and identify opportunities for regional approaches	Focus areas include: <ul style="list-style-type: none"> <li>Attending meetings to support specific activities</li> <li>Supporting LCNs to develop annual work plans</li> <li>Providing LCNs with Cancer Control Indicator Monitoring reports to enable them to monitor the 'health' of cancer services in their area</li> </ul>	ongoing	CCN Team
<b>CCN governance group</b> Strategic Plan ref: 1.3, 2.1, 3.1, 3.2	Governance group meet regularly to plan and monitor progress of the network	Regular meeting are held every 6-8 weeks	ongoing	CCN Team

## Infrastructure Development

Key Focus Area	Specific actions	Milestones	Timeframe	Who will do the work
<b>Operation and Quality Framework</b>  Strategic Plan ref: 3.1, 3.3	CCN continues to develop and refine an operation framework that supports the network to accomplish the strategic goals, objectives and service requirements	Focus areas for 09/10: <ul style="list-style-type: none"> <li>Identifying data requirements and developing processes to report on key indicators</li> <li>Refining project methodologies</li> <li>Refining communication processes</li> <li>Identifying additional service groups</li> </ul>	ongoing	CCN Team
<b>Annual National Forum</b> Strategic Plan ref: 1.3, 3.4	Work with the other regional cancer networks and the Ministry of Health to facilitate the annual national cancer control forum	Annual forum held	Dec 09	Manager