

Maori Leadership within the Regional Clinical Services Plan CCN Regional Cancer Control Hui, March 2010



REGIONAL
CLINICAL SERVICES PROGRAMME



> Working together for our region's future health



Introduction

*”nga mihi mahana ki a koutou
te na koutou, te na koutou, te na koutou katoa”*

Seeking your comments about Maori leadership
within the Regional Clinical Services Plan

Presentation Outline

- Regional Clinical Services Plan
- Regional DHB decision making framework
- Regional work programme
- Maori leadership



Regional Clinical Services Plan

A plan to evolve health services towards a new service model in the lower North Island

Vision...

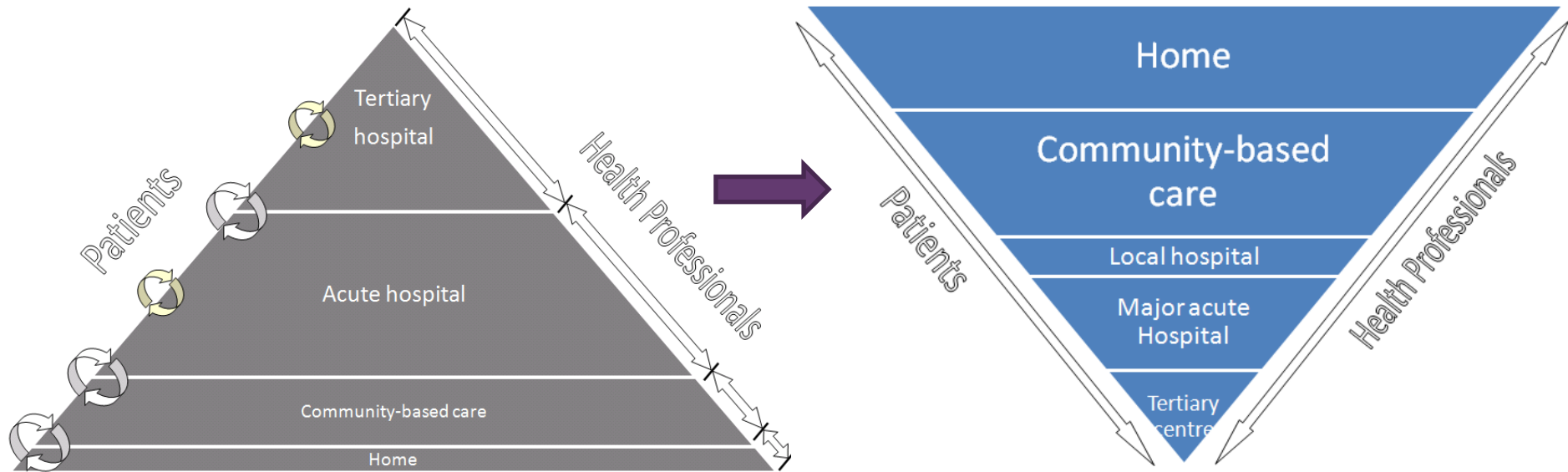
There will be a regionally coordinated system of health service planning and delivery that will lead to ongoing improvements in the sustainability, quality and accessibility of clinical services.

Why is this required?

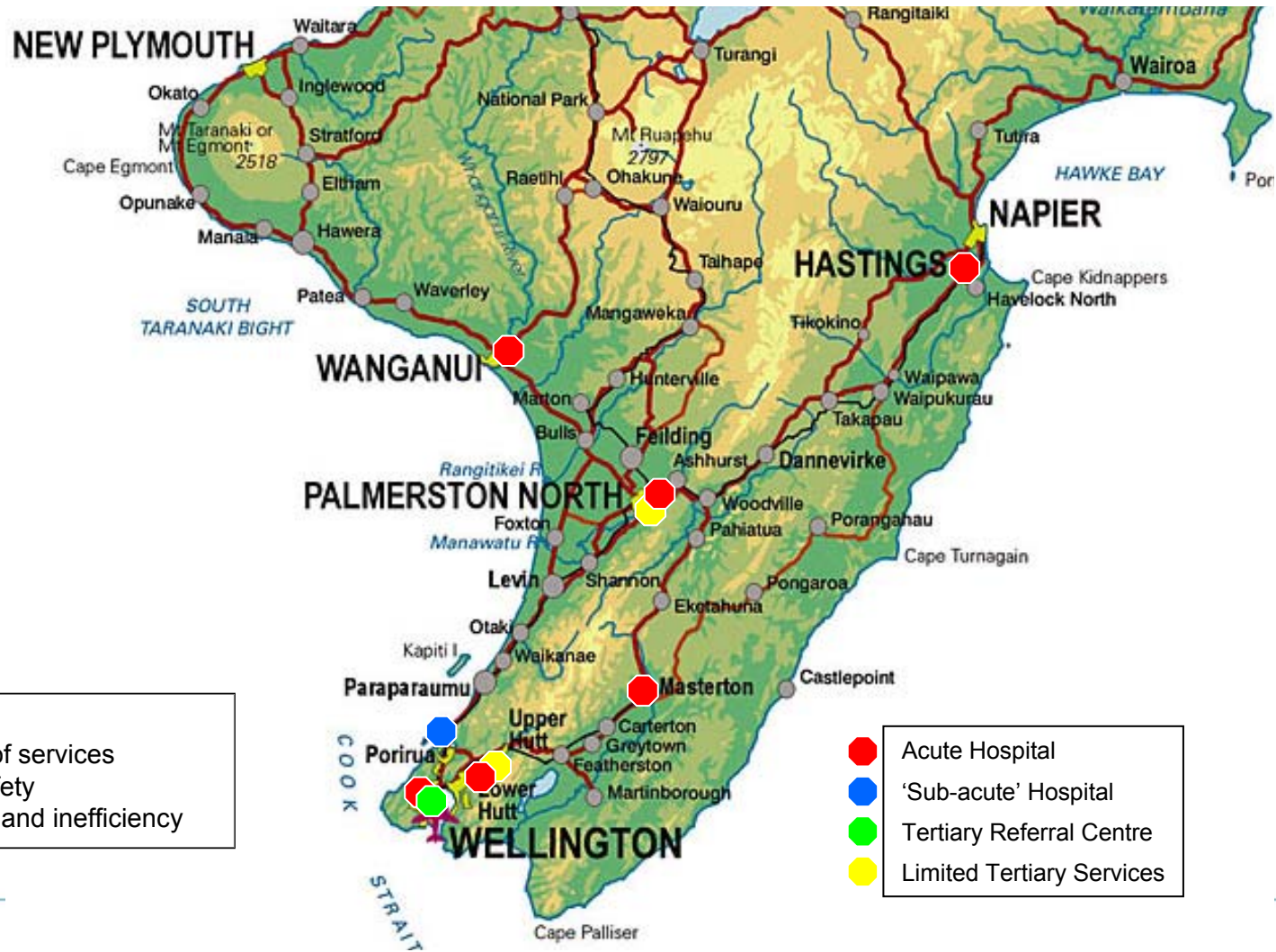
- A response to the numbers of aging population
- Recognising ownership of health by individuals
- A need to improve clinical outcomes & patient experience
- A shortage in health workforce & increasing specialisation
- Service quality and continuity
- New technology
- Financial sustainability of health services



A new service model is required... now future



Current Service Configuration



High Level Strategies for the Region

- **Clustering**
 - Consolidation of certain (acute) services
- **Differentiation (of roles)**
 - Experience curve
 - Specialised hospitals, elective surgery hospitals
- **Community-based services**
 - Requires strong and sophisticated primary healthcare infrastructure
- **Clinical networking**
 - Seen as an answer to sustainability, quality and access issues



Hospital Types

Local Hospital

- Core services (including ED) open 24/7; others reduced hours
- Serve local population of 50-150K
- Offer ED services and non-complex acute medicine and surgery
- Provide high throughput elective surgery

Major Acute Hospital

- Open 24/7
- Serve sub-regional population of 300-400K
- Offer complex acute and elective medical and surgical services, ICU and specialist diagnostics

Tertiary Referral Service

As major acute (or within major acute) plus:

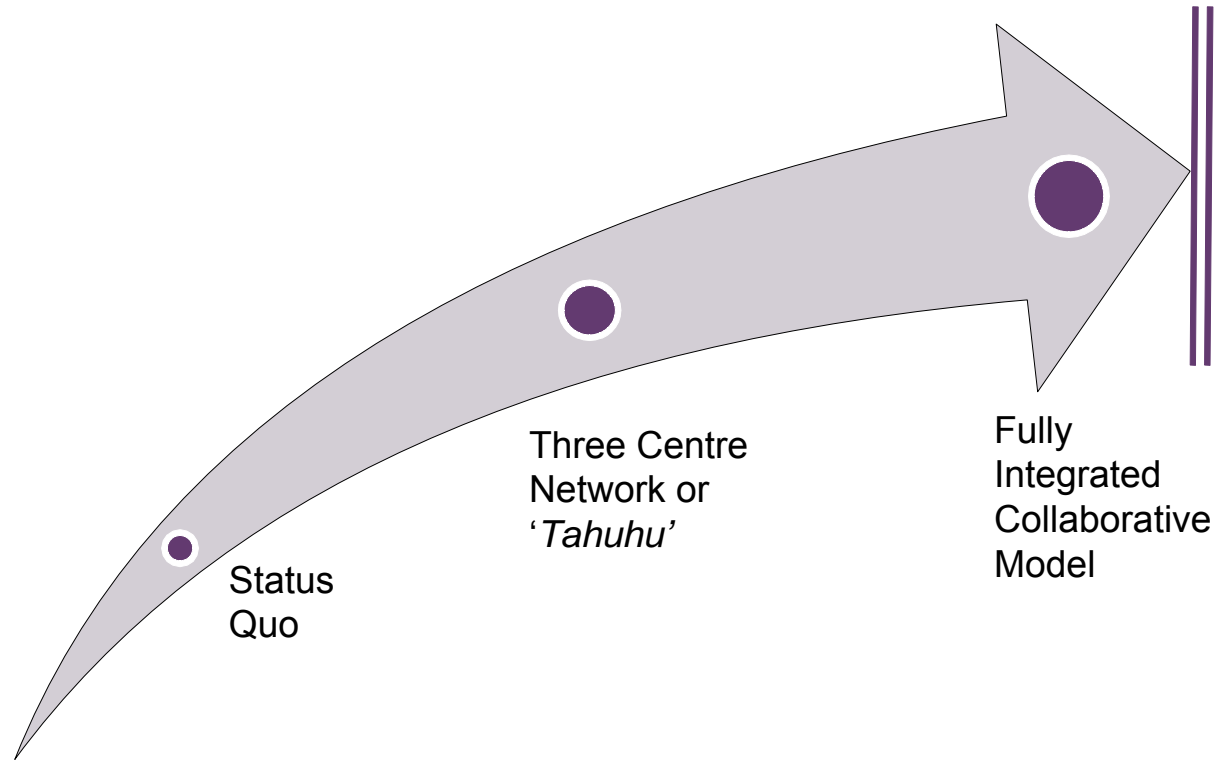
- Provide advanced diagnostic and treatment services, usually for medical and surgical subspecialties
- Linked to academic health science centre
- Serve regional population of cca. 500-850K

Specialist Hospital

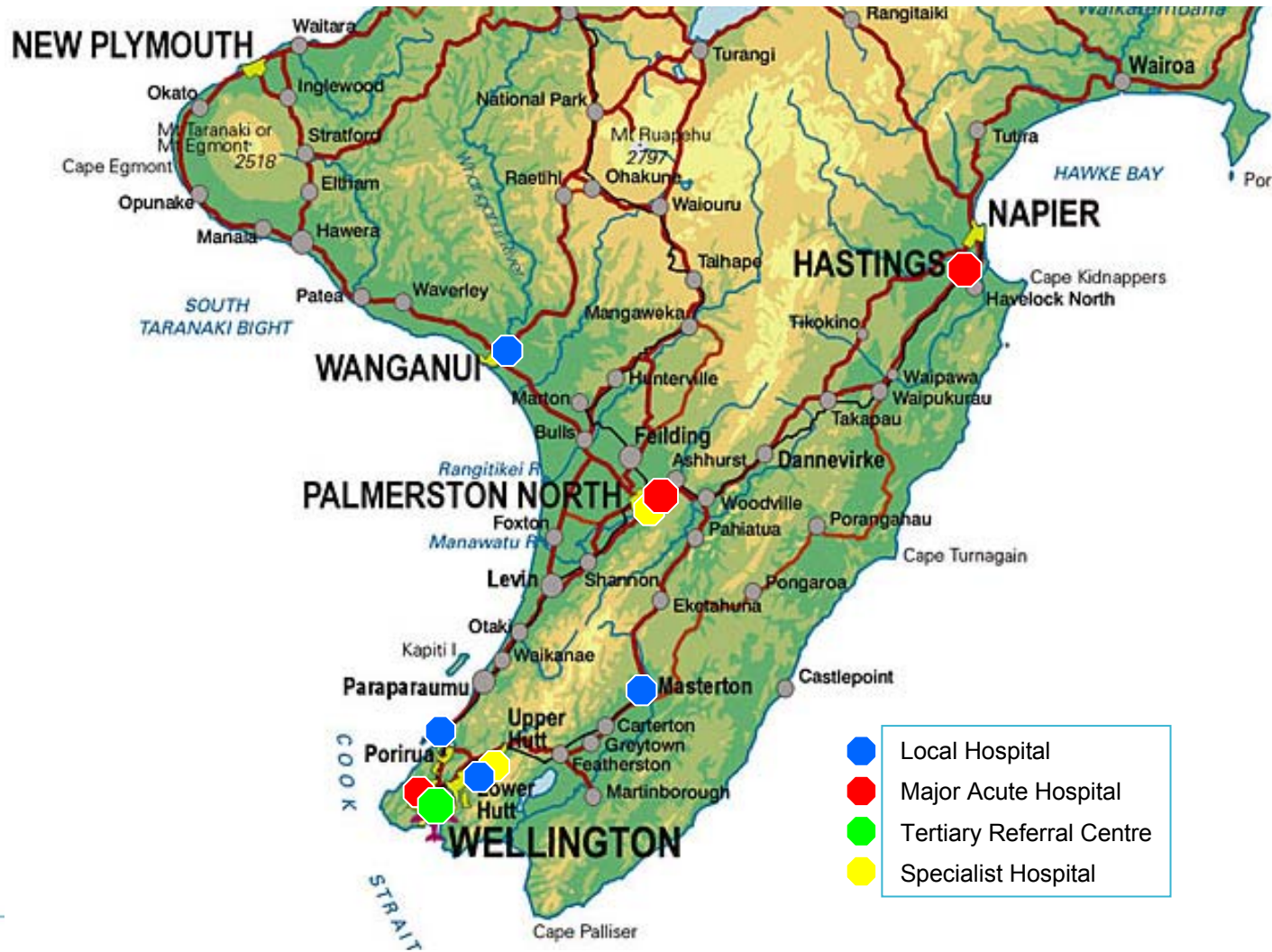
- Regional centre of excellence for a particular service, e.g. reconstructive surgery; GI surgery; cardiac services
- Linked to academic health science centre



Strategic pathway



Three Centre Network

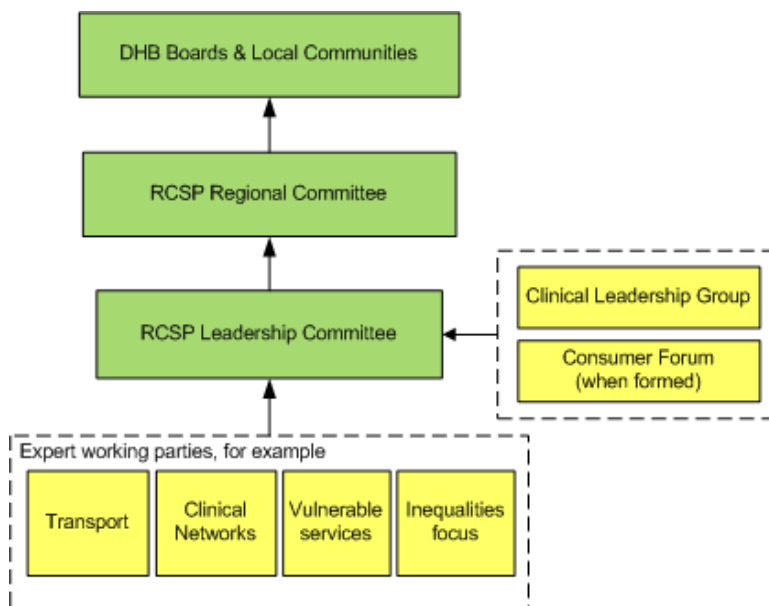


Common enablers

- Regional clinical networks and leadership
- Regional decision making
- Primary and community health infrastructure
- Transport and accommodation infrastructure
 - For patients and their families/ whānau
 - For clinicians
- Standardised processes and clinical protocols
- Information and communication technology
- Shared back office functions



Regional DHB decision making framework



RCSP Regional Committee

- Independent Chair (Dr Bruce Gollop)
- DHB Chair or CEO
- Chair, Leadership Committee (not a member)

RCSP Leadership Committee

- Six clinicians (one is the Chair)
- A Chief Operating Officer
- A GM Planning & Funding
- A person nominated by the regional
- CFOs, CIOs, and GMs HR
- Two representatives with expertise in Maori health, Pacific Peoples health, population health, and health inequalities
- A consumer representative
- A CEO sponsor (non-voting member)

Regional work programme

- Cancer – through the Central Cancer Network
- Cardiac Services (Cardiology and Cardiac Surgery)
- Older Adult & Rehabilitation Services
- Plastic Surgery Services
- Mental Health Services
- Renal Services
- Radiology Services
- Women's Services

- Integrated Care for Chronic conditions
- Regional Elective Surgery
- Regional Credentialling of Senior Medical staff

- Maori Health programme - being scoped for 2010/2011



Maori leadership

Governance & decision making

- Central Region Maori Relationship Board Forum (CRMRBF)
- A joint working party of CRMRBF & Chairs/CEOs is to clarify the relationship with the RCSP Regional Committee
- RCSP Leadership Committee - member with Maori health expertise

RCSP programme

- Scoping of Maori Health programme to occur (next 3 to 6 months)
- Central Region Maori Managers to lead (secondment)
- Clinical Networks to progress projects to reduce health inequalities for Maori, for example
 - Central Cancer Network – Addressing inequalities programme
 - Cardiac Network: Maori disparities in Cardiac Revascularisation - research with Eru Pomare
 - Renal Network – Support for Patients and Families project

